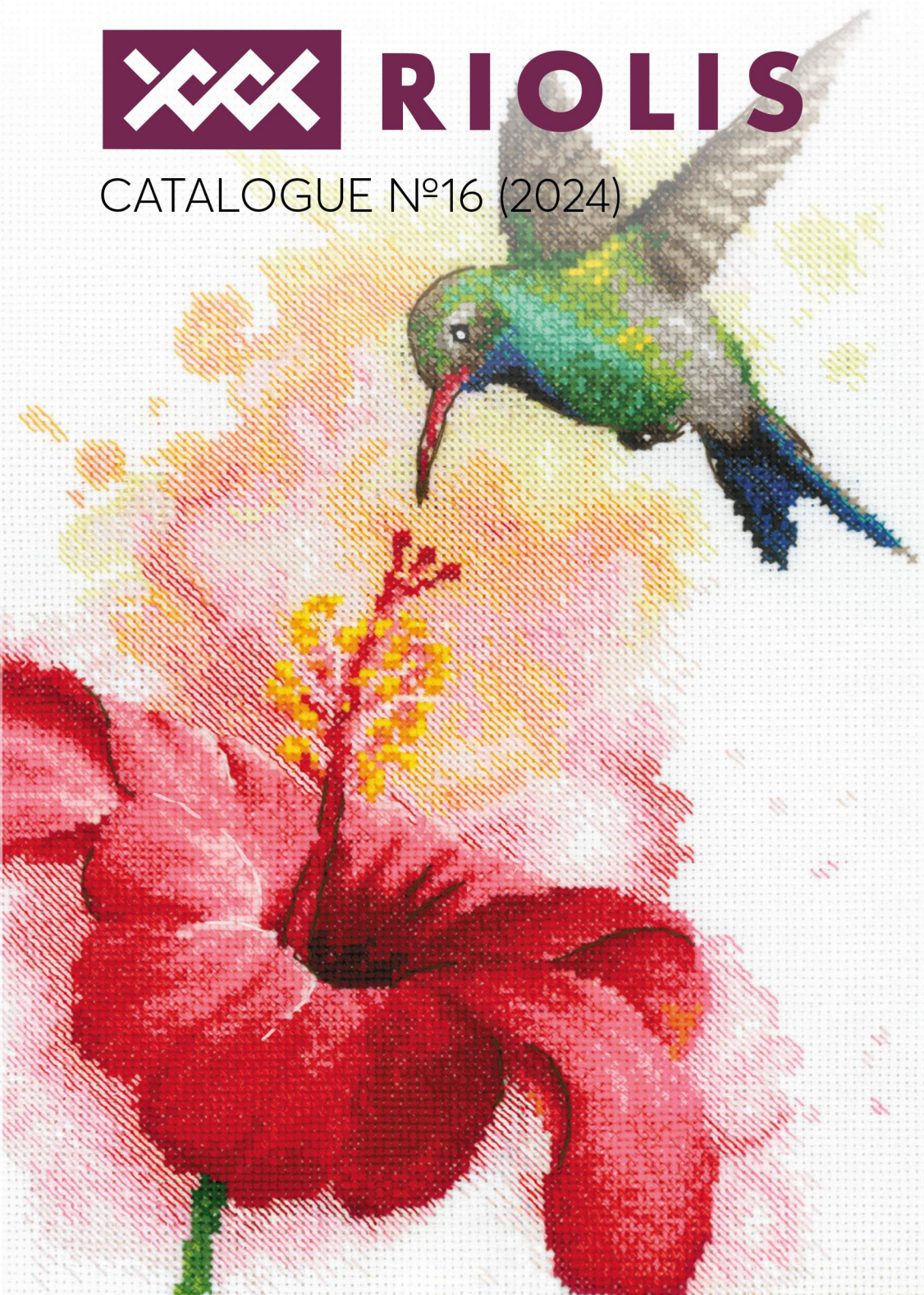





RIOLIS

CATALOGUE N°16 (2024)



CONTENTS

4	NEW RELEASES
14	DIAMOND MOSAIC
26	RIOLIS PREMIUM
32	PRE-PRINTED
39	FAMOUS ARTISTS
44	CROSS-STITCH
151	HANDICRAFT
158	FOR BEGINNERS
165	WOOL/ACRYLIC TREAD
	LAST SEASON
WA	WOOL/ACRYLIC TREADS
MA / M	STRANDED COTTON THREADS
MT	METALLIC THREAD
B	BEADS
T	TAPE
F	FELT



Tel.: +370 382 52988 (Lithuania, EU)

www.riolis.com

salesteam@riolis.com

No portion of this catalog may be reproduced or transmitted in any form without the express written permission of RIOLIS.



Welcome to the enchanting RIOLIS' world of needlework, where creativity knows no bounds and every stitch weaves a tale of craftsmanship and artistry!

Whether you're a seasoned needlework virtuoso or someone just beginning their journey into the world of threads and fabrics, our catalog is a haven of inspiration and possibilities. From classic cross-stitch to modern embroidery, we present a diverse range of kits designed to ignite your imagination and bring your artistic visions to life.



As always, expect to discover lively images stitched using our wool/acrylic yarn, featuring all your beloved themes - adorable animals, blossoming flowers, and lifelike landscapes. RIOLIS is renowned not just for its wool/acrylic threads; the designs crafted with traditional high-quality stranded cotton threads are bound to captivate your interest as well.



As you list our catalogue, envision the possibilities that unfold with each kit. Whether you seek solace in the simplicity of a cute cross stitch kit 2171 Gnomes or aspire to tackle intricate masterpieces such as magnificent cross stitch kit 2186 The Great Wave off Kanagawa after K. Hokusai Artwork, this catalog is your passport to a world of artistic fulfillment. Embrace the charm, grace, and joy that needlework brings, and let your creativity flourish in every carefully placed thread. Welcome to a realm where every stitch tells a story, and the canvas is an open invitation to your imagination.



Best wishes,
your **RIOLIS** team

RIOLIS – Everything you need to create a masterpiece in one kit!

- unique designs;
- well-chosen and easy-to-follow color charts;
- convenient sorters;
- high-quality components (fabric, threads, needles).



1 For your convenience, according to the kit cover you can easily find out the kit number **(1)**, materials included in the kit **(2)**, techniques used **(3)**, size **(4)** and title **(5)**.

2 Examples of using color in kit marking:

- 1698 WOOL/ACRYLIC
- 1722 STRANDED COTTON
- B214 BEADS
- 1708AC OTHER MATERIALS



wool/acrylic or stranded cotton

full-colored chart

embroidery needle

instruction for embroidery

RIOLIS diamond mosaic kits are:

- smooth square mosaic pieces, glazed with a special shining composition;
- thick canvas with a reliable adhesive coating;
- high-quality components: trays, tweezers, styluses.



But the most important thing is unique and spectacular designs from the best of RIOLIS collection!

Choose your diamond mosaic and immerse yourself in the world of meditative and relaxing diamond embroidery.



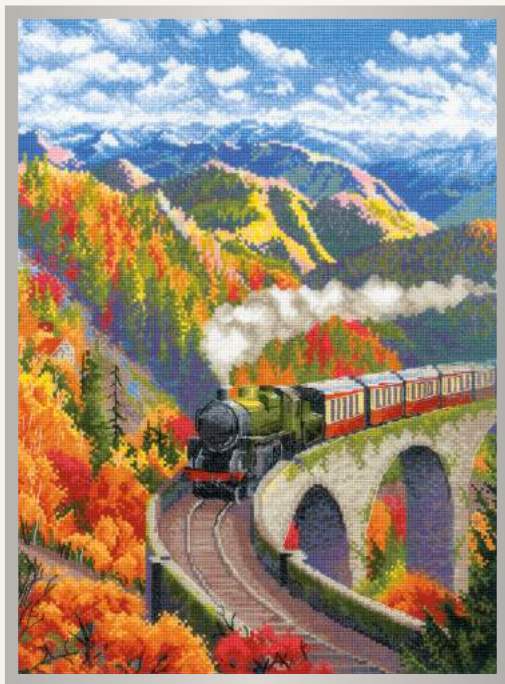
2176 Purple Anemones

30x30 cm, 11 $\frac{3}{4}$ "x11 $\frac{3}{4}$ ", 14 ct colored Aida, MA



2178 Hummingbird

21x30 cm, 8 $\frac{1}{4}$ "x11 $\frac{3}{4}$ ",
14 ct white Aida, MA



2211 Autumn Express

30x40 cm, 11 $\frac{3}{4}$ "x15 $\frac{3}{4}$ ", 14 ct white Aida, WA



2196 Lemurs

24x30 cm, 9 $\frac{1}{2}$ "x11 $\frac{3}{4}$ ",
14 ct white Aida, WA



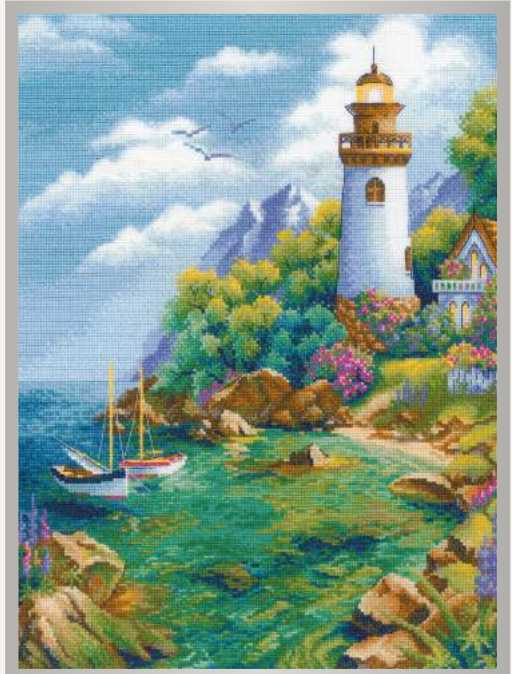
2212 Crowned Crane
18x24 cm, 7"x9½",
14 ct white Aida, MA



2214 Color of Flame
30x30 cm, 11¾"x11¾", 10 ct flaxen Aida, WA



2213 Sloth
21x30 cm, 8¼"x11¾",
14 ct white Aida, WA



2188 Quiet Harbor
30x40 cm, 11¾"x15¾", 14 ct white Aida, MA



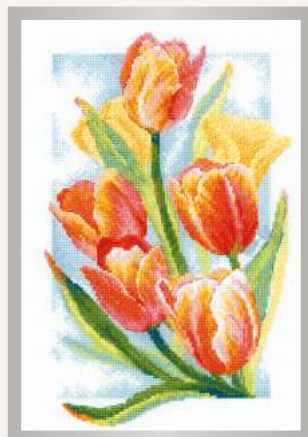
2199 Park Güell 60x30 cm, 23½"x11¾", 14 ct white Aida, WA



2189 Spring Glow. Daffodils
21x30 cm, 8¼"x11¾",
14 ct white Aida, MA



2190 Spring Glow. Crocuses
21x30 cm, 8¼"x11¾",
14 ct white Aida, MA



2191 Spring Glow. Tulips
21x30 cm, 8¼"x11¾",
14 ct white Aida, MA

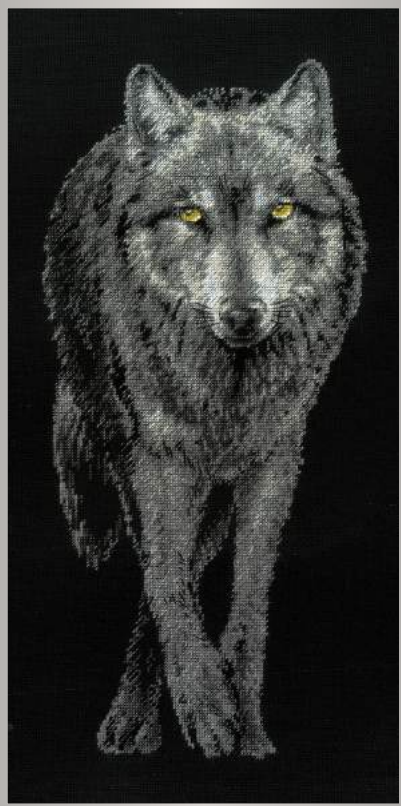


2180 Kittens 40x15 cm, 15¾"x6", 14 ct flaxen, WA



2216 Moonlight Magic

30x40 cm, 11 $\frac{3}{4}$ "x15 $\frac{3}{4}$ ", 14 ct black Aida, WA



2187 Alpha 25x50 cm, 9 $\frac{3}{4}$ "x19 $\frac{3}{4}$ ",
14 ct black Aida, WA



2209 Steampunk Fox

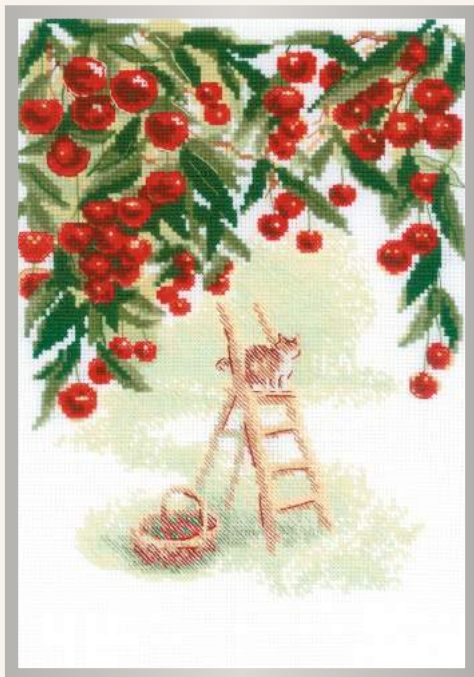
20x20 cm, 7 $\frac{3}{4}$ "x7 $\frac{3}{4}$ ",
18 ct colored Aida, MA



2210 Furry Bumblebee 15x15 cm,
6"x6", 18 ct colored Aida, MA



2182 Tropical Beauty 40x30 cm, 15¾"x11¾", 14 ct colored Aida, MA



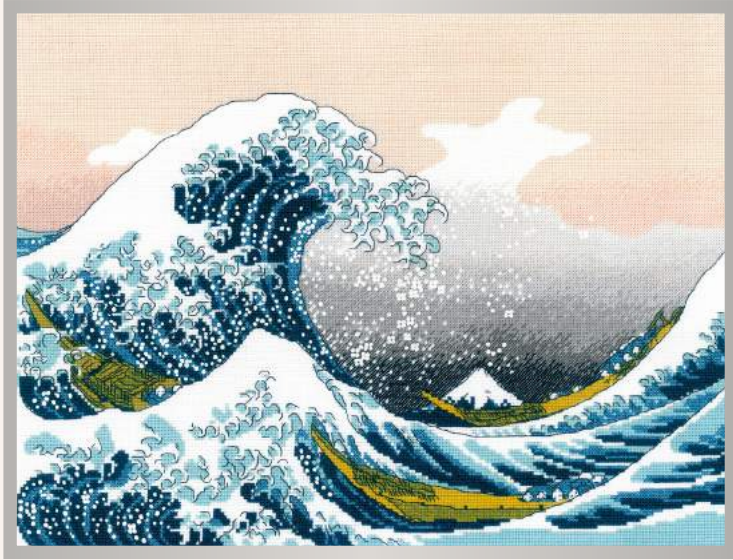
2205 Cherry Garden

21x30 cm, 8¼"x11¾", 14 ct white Aida, WA



2206 Tea House

18x24 cm, 7"x9½",
14 ct white Aida, WA



2186 The Great Wave off Kanagawa after K. Hokusai Artwork
40x30 cm, 15¾"x11¾", 14 ct white Aida, MA



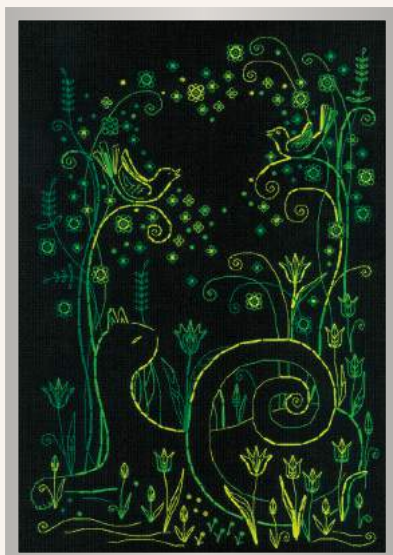
2185 Cute Hamster
13x16 cm, 5"x6¼",
10 ct white Aida, WA



2201 Apple Day
21x30 cm, 8¼"x11¾", 18 ct white Aida, MA



2173 Cats. Moonlight
30x30 cm, 11 $\frac{3}{4}$ "x11 $\frac{3}{4}$ ", 14 ct black Aida, M



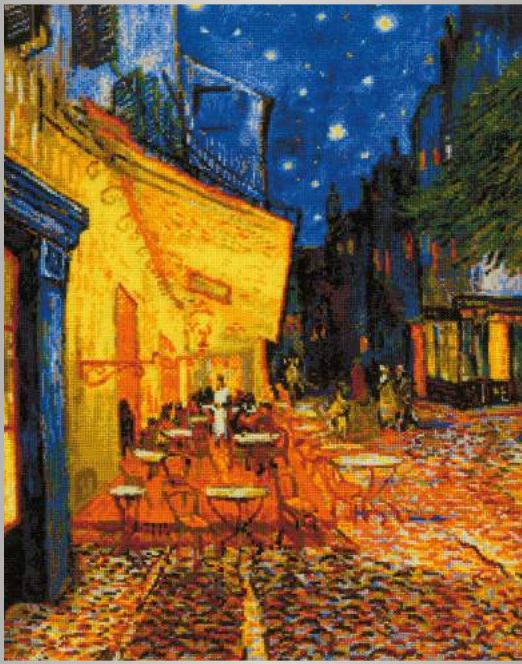
2172 Cats. Spring Melody
21x30 cm, 8 $\frac{1}{4}$ "x11 $\frac{3}{4}$ ",
14 ct black Aida, M



2177 West Wind
21x30 cm, 8 $\frac{1}{4}$ "x11 $\frac{3}{4}$ ",
14 ct white Aida, WA



2174 Cats. Summertime
21x30 cm, 8 $\frac{1}{4}$ "x11 $\frac{3}{4}$ ",
14 ct black Aida, M



2217 Café Terrace at Night
after V. Van Gogh's Painting 40x50 cm,
15¾"x19¾", 14 ct white Aida, WA



2215 Beach Swing
21x30 cm, 8¼"x11¼",
14 ct white Aida, WA



2198 Tender Love
21x30 cm, 8¼"x11¼", 14 ct white Aida, WA



2183 Cushion/Panel Persian Patterns
40x40 cm, 15¾"x15¾", 10 ct white Aida, WA



2192 Iguana 30x21 cm, 11 $\frac{3}{4}$ "x8 $\frac{1}{4}$ ", 14 ct black Aida, WA



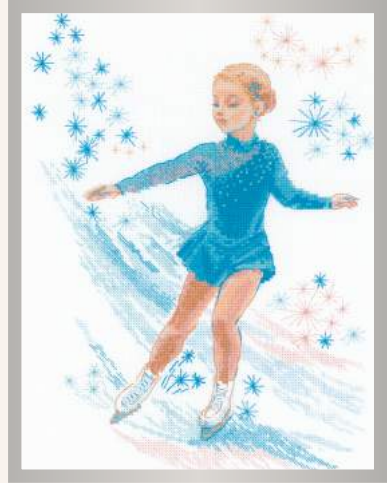
2207 Winter Whispers 30x21 cm, 11 $\frac{3}{4}$ "x8 $\frac{1}{4}$ ", 14 ct colored Aida, WA



2171 Gnomes 30x21 cm, 11 $\frac{3}{4}$ "x8 $\frac{1}{4}$ ", 14 ct white Aida, MA



2170 Forget Me Nots in a Basket
22x22 cm, 8³/₄"x8³/₄", 14 ct flaxen Aida, MA



2202 Figure Skating
24x30 cm, 9¹/₂"x11³/₄",
14 ct white Aida, WA, B



2175 Juicy Pomegranate
30x21 cm, 11³/₄"x8¹/₄",
14 ct white Aida, MA



2168 Ripe Blueberry 20x20 cm,
7³/₄"x7³/₄", 14 ct white Aida, WA



2169 Ripe Cherry 20x20 cm,
7³/₄"x7³/₄", 14 ct white Aida, WA



DIAMOND MOSAIC

Best of RIOLIS collection

Creating diamond mosaics is a thrilling activity suitable for both adults and young enthusiasts. The process of applying the diamonds is easy and calming, so select your preferred design and delight in completing your latest masterpiece. Embark on your creative journey with joy!

AM0065 **Velvet Look**

30x40 cm,
11 $\frac{3}{4}$ "x15 $\frac{3}{4}$ " (17 colors)



AM0054 **Watercolor Gerberas**

30x30 cm,
11 $\frac{3}{4}$ "x11 $\frac{3}{4}$ " (27 colors)



AM0053 **Watercolor Phlox**

30x30 cm,
11 $\frac{3}{4}$ "x11 $\frac{3}{4}$ " (27 colors)



AM0055 Carps


30x30 cm, 11 $\frac{3}{4}$ "x11 $\frac{3}{4}$ " (18 colors)



AM0056 Meow-Zen

30x30 cm, 11 $\frac{3}{4}$ "x11 $\frac{3}{4}$ " (20 colors)



 **AM0057 Egypt**

30x30 cm, 11 $\frac{3}{4}$ "x11 $\frac{3}{4}$ " (18 colors)



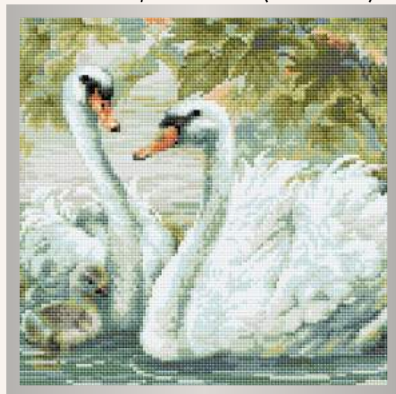
AM0058 White Doves

30x30 cm, 11 $\frac{3}{4}$ "x11 $\frac{3}{4}$ " (26 colors)



AM0059 Lovebirds

30x30 cm, 11 $\frac{3}{4}$ "x11 $\frac{3}{4}$ " (29 colors)



AM0036 White Swans

30x30 cm, 11 $\frac{3}{4}$ "x11 $\frac{3}{4}$ " (25 colors)



AM0072 Dahlias

40x40 cm, 15³/₄"x15³/₄" (21 colors)



AM0025 The Italian Courtyard

27x38 cm, 10³/₄"x15" (20 colors)



AM0015 Ripe Apples

27x27 cm, 10³/₄"x10³/₄" (23 colors)



AM0060 Crocuses

20x20 cm, 7³/₄"x7³/₄" (18 colors)



AM0032 Yellow Narcissus

10x10 cm, 4"x4" (10 colors)



AM0008 Basket of Strawberries

27x27 cm, 10³/₄"x10³/₄" (18 colors)




AM0016 Pansy Medley
27x38 cm, 10³/₄"x15" (27 colors)



AM0038 Bright Butterflies
30x30 cm, 11³/₄"x11³/₄" (22 colors)




 **AM0023 Under My Umbrella**
27x27 cm, 10³/₄"x10³/₄" (21 colors)



AM0012 Coffee
38x27 cm, 15"x10³/₄" (21 colors)



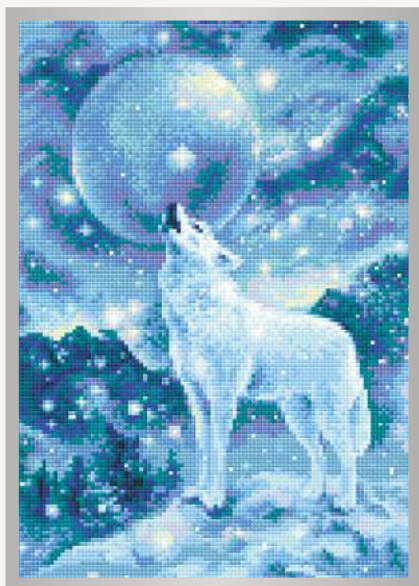
 **AM0062 Little Deer**
20x20 cm, 7³/₄"x7³/₄"
(15 colors)

AM0063 Little Owls
20x20 cm, 7³/₄"x7³/₄"
(12 colors)





AM0050 The Great Bear
27x38 cm, 10³/₄"x15" (21 colors)



AM0042 Ice-Cold Wind
27x38 cm, 10³/₄"x15" (16 colors)



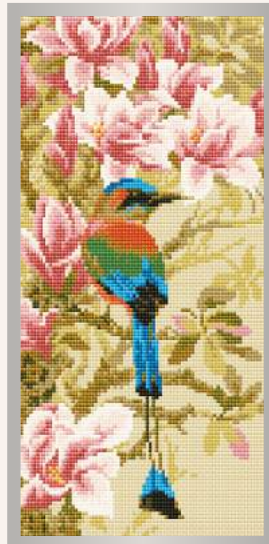
AM0041 Magic Owl
27x38 cm, 10³/₄"x15" (20 colors)



AM0043 Wise Raven
27x38 cm, 10³/₄"x15", 20 colors



AM0044 Starry Night Over the Rhone
after Van Gogh's Painting
38x27 cm, 15"x10³/₄" (23 colors)



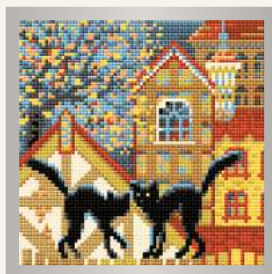
AM0046
Motmot
20x38 cm, 7³/₄"x15"
(19 colors)



AM0011
City & Cats. Spring
20x20 cm, 7³/₄"x7³/₄"
(14 colors)



AM0048
City & Cats. Summer
20x20 cm, 7³/₄"x7³/₄"
(13 colors)



AM0049
City & Cats. Autumn
20x20 cm, 7³/₄"x7³/₄"
(13 colors)



AM0010
City & Cats. Winter
20x20 cm, 7³/₄"x7³/₄"
(11 colors)



AM0024
Wonderful Rose
20x38 cm, 7³/₄"x15"
(17 colors)



AM0040
Snow Leopard
30x30 cm,
11 $\frac{3}{4}$ "x11 $\frac{3}{4}$ " (12 colors)



AM0045
Bagira
30x30 cm,
11 $\frac{3}{4}$ "x11 $\frac{3}{4}$ " (12 colors)



AM0005
Basset Hound Puppy
27x38 cm,
10 $\frac{3}{4}$ "x15" (22 colors)



AM0039
Pair of Horses
40x40 cm,
15 $\frac{3}{4}$ "x15 $\frac{3}{4}$ " (30 colors)



AM0069
Pansies

21x30 cm, 8¼"x11¾"
(18 colors)



AM0007 Poppies


27x38 cm, 10¾"x15"
(17 colors)



AM0070
Early Tulips

21x30 cm, 8¼"x11¾"
(15 colors)



 **AM0006 Sunflowers**

27x38 cm, 10¾"x15"
(18 colors)



AM0047
Other Worlds
40x40 cm, 15¾"x15¾" (33 colors)



AM0073 Winter Tea Time
30x40 cm, 11¾"x15¾"
(25 colors)



AM0013
Serbian Landscape
40x40 cm, 15¾"x15¾" (28 colors)



AM0018
Santa Claus
10x10 cm, 4"x4" (17 colors)



AM0004
Christmas Eve
10x10 cm, 4"x4" (12 colors)



AM0014 Russian Blue
20x25 cm, 7³/₄"x9³/₄" (11 colors)



AM0034 Oranges
20x20 cm, 7³/₄"x7³/₄"
(16 colors)



AM0033 Pomegranates
20x20 cm, 7³/₄"x7³/₄"
(18 colors)



AM0076 Snowfall in the Forest
30x30 cm, 11³/₄"x11³/₄"
(21 colors)



AM0061 Roses
20x20 cm, 7³/₄"x7³/₄"
(16 colors)



AM0009
Peonies in a Vase
38x38 cm, 15"x15" (39 colors)



AM0031 Pink Rose
10x10 cm, 4"x4"
(8 colors)



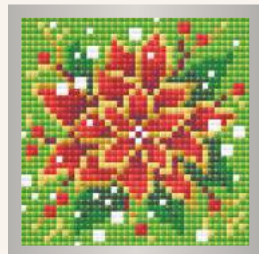
AM0030
Purple Bindweed
10x10 cm, 4"x4" (8 colors)



AM0026
Still Life with Lemon
38x27 cm, 15"x10¾" (14 colors)



AM0037
Pair of Pansies
10x10 cm, 4"x4" (11 colors)



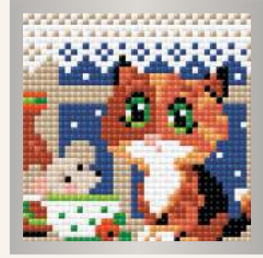
AM0019
Poinsettia
10x10 cm, 4"x4" (9 colors)



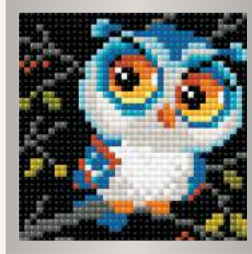
AM0029 Stick with Me
10x10 cm, 4"x4" (10 colors)



AM0035 Best Friend
10x10 cm, 4"x4" (10 colors)



AM0028 Tea for Two
10x10 cm, 4"x4" (12 colors)



AM0017 Owl
10x10 cm, 4"x4" (14 colors)



AM0020 Turtle
10x10 cm, 4"x4" (14 colors)



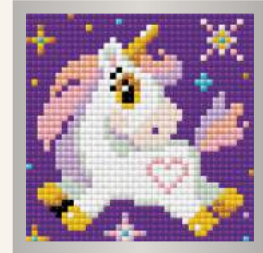
AM0022 Butterfly
10x10 cm, 4"x4" (13 colors)



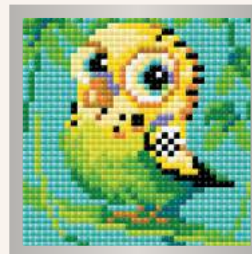
AM0064 Snow Tiger
10x10 cm, 4"x4" (10 colors)



AM0052 Calf in the Meadow
10x10 cm, 4"x4" (12 colors)



AM0051 Little Unicorn
10x10 cm, 4"x4" (11 colors)



AM0021 Parakeet
10x10 cm, 4"x4" (14 colors)



AM0027 Jam Day
10x10 cm, 4"x4" (12 colors)



AM0074 Sunshine
10x10 cm, 4"x4" (8 colors)

RIOLIS

The RIOLIS Premium line offers cross-stitch kits designed for experienced needleworkers. Featuring intricate and expansive designs across various themes, these kits provide an opportunity for skilled stitchers to unleash their inner artist and craft a unique masterpiece with their own hands.

100/063 Girl with a Pearl Earring
after J. Vermeer's Painting
 30x40 cm, 11 $\frac{3}{4}$ "x15 $\frac{3}{4}$ ", 14 ct black Aida,
 MA (38 colors)



100/057 Sunny Day
 50x40 cm, 19 $\frac{3}{4}$ "x15 $\frac{3}{4}$ ", 14 ct colored Aida, MA (37 colors)



100/062 The Birth of Venus after S. Botticelli's Painting 40x60 cm, 15³/₄"x23¹/₂", 14 ct colored Aida, MA (26 colors)



100/043 A Secret Romance 40x60 cm, 15³/₄"x23¹/₂", 14 ct white Aida, MA, T (30 colors)



100/061 Laurel after A. Mucha's Artwork 30x30 cm, 11³/₄"x11³/₄", 18 ct colored Aida, MA (30 colors)



100/058 Girl with Easel after A. Mucha's Artwork 28x40 cm, 11"x15³/₄", 18 ct colored Aida, MA (29 colors)



100/042 Flemish Summer
40x50 cm, 15 $\frac{3}{4}$ "x19 $\frac{3}{4}$ ",
14 ct colored Aida, MA (30 colors)



100/049 Tea Roses
30x40 cm, 11 $\frac{3}{4}$ "x15 $\frac{3}{4}$ ",
14 ct colored Aida, MA (26 colors)



100/047 Pastoral
40x50 cm, 15 $\frac{3}{4}$ "x19 $\frac{3}{4}$ ",
14 ct colored Aida, MA (31 colors)



100/056 Adagio
40x50 cm, 15 $\frac{3}{4}$ "x19 $\frac{3}{4}$ ",
14 ct colored Aida, MA, T (20 colors)



100/045 Forget Me Not 30x40 cm,
11¾"x15¾", 14 ct colored Aida, MA, B, T
(19 colors)



100/055 Windflowers after
J. W. Waterhouse's Painting 30x45 cm,
11¾"x17¾", 14 ct white Aida, MA (33 colors)



100/028 Lilac Evening 30x40 cm,
11¾"x15¾", 14 ct colored Aida, MA, B, T
(16 colors)



100/027 Velvet Evening 30x40 cm,
11¾"x15¾", 14 ct colored Aida, MA, B, T
(16 colors)



100/036 Summer Delight
35x45 cm, 13 $\frac{3}{4}$ "x17 $\frac{3}{4}$ ",
14 ct white Aida, MA, B (29 colors)



100/021 Wolves
40x60 cm, 15 $\frac{3}{4}$ "x23 $\frac{1}{2}$ ",
14 ct white Aida, MA (14 colors)



100/029 Persian Garden
30x50 cm, 11 $\frac{3}{4}$ "x19 $\frac{3}{4}$ ",
14 ct white Aida, MA, B
(27 colors)



100/060 Still Life with Watermelon
50x40 cm, 19 $\frac{3}{4}$ "x15 $\frac{3}{4}$ ",
14 ct colored Aida, MA (35 colors)



100/052 Spring Tulips

70x30 cm, 27½"x11¼", 14 ct colored Aida, MA (18 colors)



100/037 Scarlet Poppies

70x30 cm, 27½"x11¼", 14 ct colored Aida, MA, B, MT (9 colors)



100/038 In the Sunset

60x40 cm, 23½"x15¾", 14 ct white Aida, MA, B (27 colors)


RIOLIS

Discover RIOLIS' range of needlework kits featuring fabric with a pre-printed background for swift and impressive results.

While the main design and select details are stitched based on the chart (not pre-printed on the fabric), this technique adds depth and a 3D effect to your finished piece.

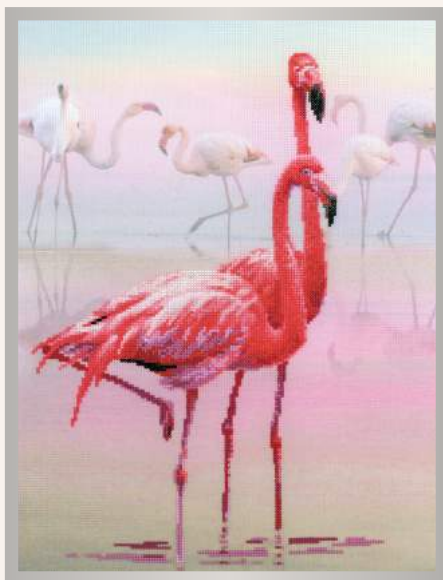
This approach expedites creating a full-coverage picture as you skip stitching the background, offering a faster, more dimensional outcome!



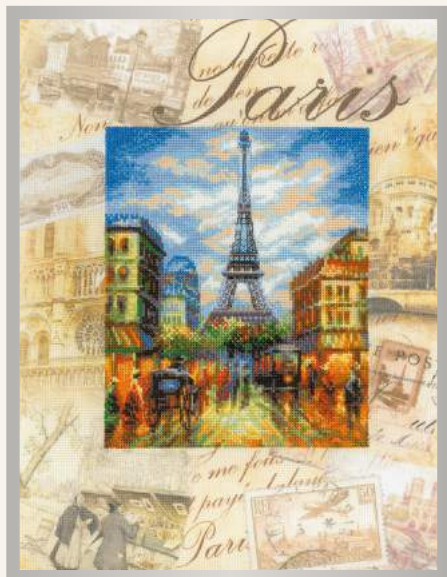
 **0028 PT Cranes**
30x40 cm, 11¾"x15¾",
14 ct Aida, MA



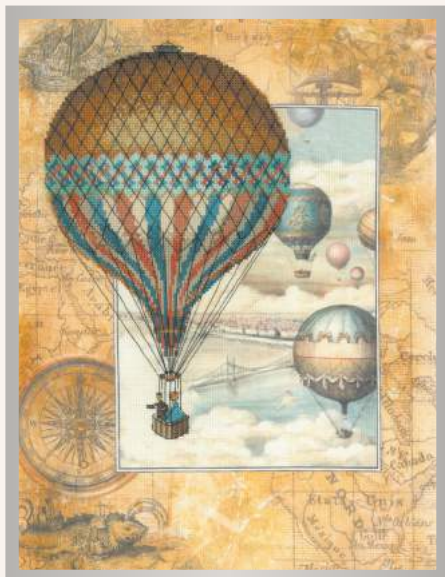
0077 PT Toucan
30x40 cm, 11¾"x15¾", 14 ct Aida, MA



0012 PT Flamingo
30x40 cm, 11¾"x15¾", 14 ct Aida, MA



0018 PT Cities of the World. Paris
30x40 cm, 11 $\frac{3}{4}$ "x15 $\frac{3}{4}$ ", 14 ct Aida, MA



0033 PT Around the World
30x40 cm, 11 $\frac{3}{4}$ "x15 $\frac{3}{4}$ ", 14 ct Aida, MA



0046 PT Cleopatra
30x40 cm, 11 $\frac{3}{4}$ "x15 $\frac{3}{4}$ ", 14 ct Aida, MA



**0094 PT The Tree of Life
after G. Klimt's Painting**
30x40 cm, 11 $\frac{3}{4}$ "x15 $\frac{3}{4}$ ", 14 ct Aida, MA, MT, B



0076 PT Plate with Chrysanthemums. Satin Stitch
21x21 cm, 8¼"x8¼",
gabardine fabric, MA



0075 PT Plate with Pink Poppies. Satin Stitch
21x21 cm, 8¼"x8¼",
gabardine fabric, MA



0058 PT Globe Flowers. Satin Stitch
20x20 cm, 7¾"x7¾",
gabardine fabric, MA



0059 PT Pansies. Satin Stitch
20x20 cm, 7¾"x7¾",
gabardine fabric, MA



0054 PT Autumn Colors
40x30 cm, 15¾"x11¼",
10 ct Aida, WA

**0071 PT Peony**20x20 cm, 7 $\frac{3}{4}$ "x7 $\frac{3}{4}$ ", 14 ct Aida, MA**0070 PT Rose**20x20 cm, 7 $\frac{3}{4}$ "x7 $\frac{3}{4}$ ", 14 ct Aida, MA**0089 PT Chamomiles**20x20 cm, 7 $\frac{3}{4}$ "x7 $\frac{3}{4}$ ",
gabardine fabric, MA**0083 PT Frogs**20x20 cm, 7 $\frac{3}{4}$ "x7 $\frac{3}{4}$ ", 14 ct Aida, MA**0066 PT Primroses.****Satin Stitch**13x16 cm, 5"x6 $\frac{1}{4}$ ",
gabardine fabric,
MA**0065 PT Crocuses.****Satin Stitch**13x16 cm, 5"x6 $\frac{1}{4}$ ",
gabardine fabric,
MA, B**0084 PT Birch
Bolete. Satin Stitch**13x16 cm, 5"x6 $\frac{1}{4}$ ",
gabardine fabric,
MA



0043 PT White Stag
30x40 cm, 11³/₄"x15³/₄",
14 ct Aida, MA, MT



0024 PT Unicorn
30x40 cm, 11³/₄"x15³/₄",
14 ct Aida, MA, MT, B



0078 PT Griffin
40x30 cm, 15³/₄"x11³/₄",
14 ct Aida, MA



0091 PT Friendship Tea
20x20 cm, 7³/₄"x7³/₄",
14 ct Aida, MA



0092 PT Sweetheart's Coffee
20x20 cm, 7³/₄"x7³/₄",
14 ct Aida, MA

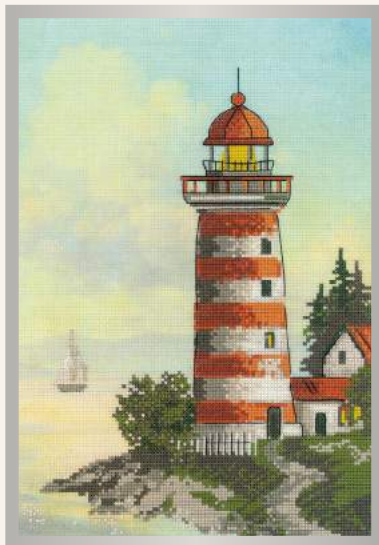
SYMBOL OF THE YEAR

**0057 PT Forest Dragon**30x40 cm, 11 $\frac{3}{4}$ "x15 $\frac{3}{4}$ ", 14 ct Aida, MA**0088 PT Stork Family**30x40 cm, 11 $\frac{3}{4}$ "x15 $\frac{3}{4}$ ", 14 ct Aida, MA**0051 PT Lamb and Rabbit**30x30 cm, 11 $\frac{3}{4}$ "x11 $\frac{3}{4}$ ", 10 ct Aida, WA**0095 PT Treasure Hunting**40x30 cm, 15 $\frac{3}{4}$ "x 11 $\frac{3}{4}$ ", 14 ct Aida, MA**0097 PT Rose Hip in the Garden**15x15 cm, 6"x6", gabardine fabric,
WA**0096 PT Rudbeckia in the Garden**15x15 cm, 6"x6", gabardine fabric,
WA



0038 PT Eagle Owl

30x40 cm, 11 $\frac{3}{4}$ "x15 $\frac{3}{4}$ ", 14 ct Aida, MA



0044 PT Lighthouse

21x30 cm, 8 $\frac{1}{4}$ "x11 $\frac{3}{4}$ ",
14 ct Aida, MA

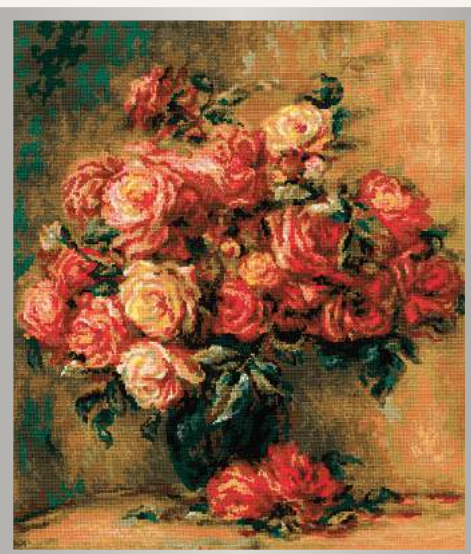


0052 PT Foal and Puppy

30x30 cm, 11 $\frac{3}{4}$ "x11 $\frac{3}{4}$ ", 10 ct Aida, WA



2137 Spring Bouquet after P. A. Renoir's Painting 40x50 cm, 15³/₄"x19³/₄", 14 ct white Aida, WA



1402 Bouquet of Roses after P. A. Renoir's Painting 40x48 cm, 15³/₄"x19", 14 ct white Aida, WA, MA



2032 Sunflowers after V. Van Gogh's Painting 30x40 cm, 11³/₄"x15³/₄", 14 ct white Aida, WA



1772 Cornflowers after I. Levitan's Painting 30x40 cm, 11³/₄"x15³/₄", 14 ct white Aida, WA



1702 Windmill at Knokke after C. Pissarro's Painting 33x25 cm, 13"x9¾", 10 ct white Aida, WA

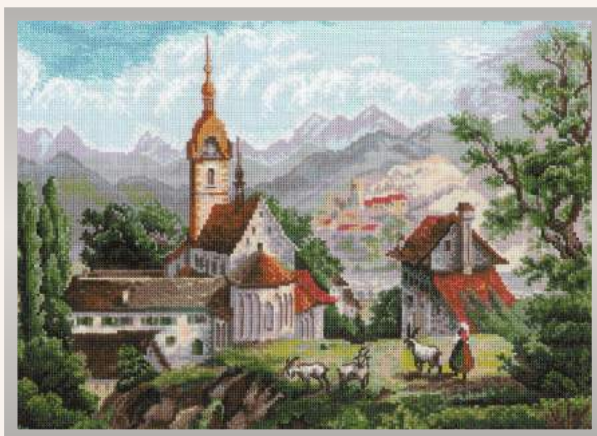


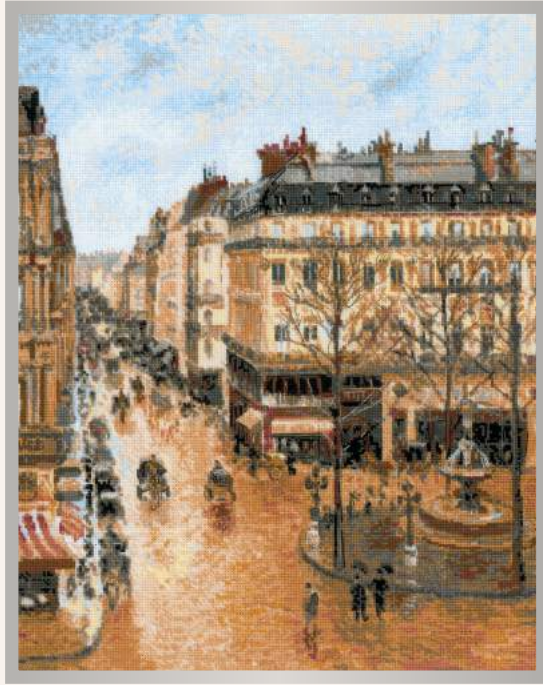
2040 Sunflowers in a Basket after N. Antonova's Painting
21x30 cm, 8¼"x11¾",
14 ct white Aida, WA



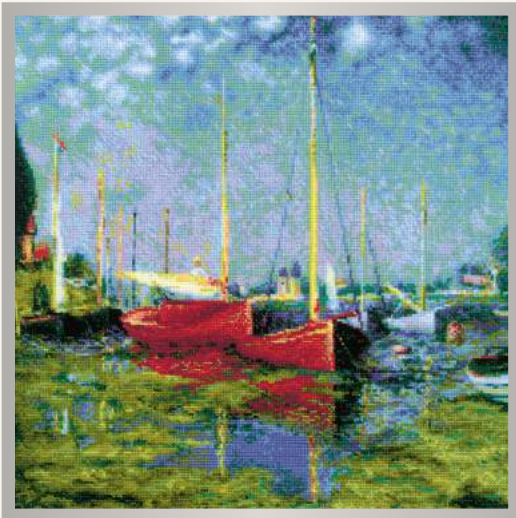
1643 Tulip Fields after C. Monet's Painting
33x25 cm, 13"x9¾", 10 ct white Aida, WA

1701 Monastery Shonenver after Engravings of the XIX century
40x30 cm, 15¾"x11¾",
14 ct white Aida, MA





1955 Saint-Honore Street after C. Pissarro's Painting
40x50 cm, 15³/₄"x19³/₄", 14 ct white Aida, WA



1779 Argenteuil after C. Monet's Painting
40x40 cm, 15³/₄"x15³/₄", 14 ct white Aida, WA

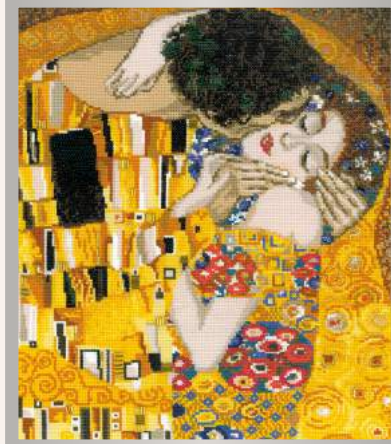


2053 Carnation, Lily, Lily, Rose after J. S. Sargent's Painting
30x35 cm, 11³/₄"x13³/₄", 14 ct white Aida, WA, MA

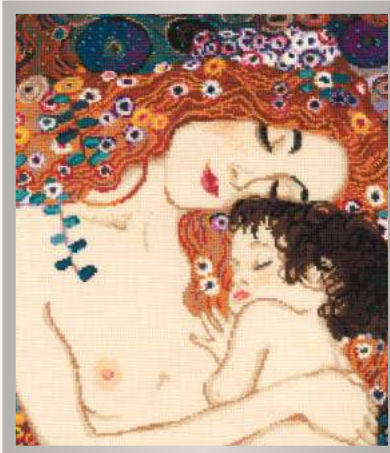


1844 Rain, Steam, and Great Railway Bridge
after J.M.W. Turner's Painting

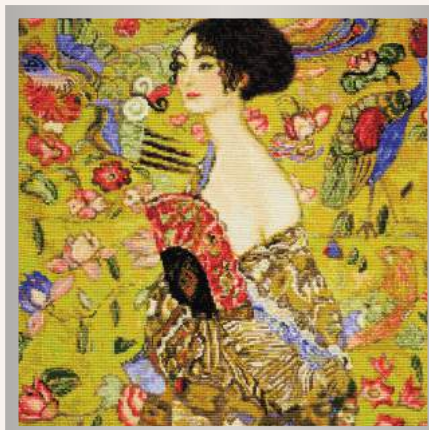
38x26 cm, 15"x10¼", 10 ct white Aida, WA



1170 The Kiss after G. Klimt's Painting
30x35 cm, 11¾"x13¾", 14 ct white Aida,
WA, B, bugle



916 Motherly Love
after G. Klimt's Painting 30x35 cm,
11¾"x13¾", 14 ct white Aida, WA, B



1226 Lady with a Fan
after G. Klimt's Painting
35x35 cm, 13¾"x13¾",
14 ct white Aida, WA, MT, B



1850 In the Meadow
after C. Monet's Painting
40x30 cm, 15¾"x11¾",
14 ct white Aida, WA



1698 Almond Blossom
after V. van Gogh's Painting
40x30 cm, 15³/₄"x11³/₄",
14 ct white Aida, WA



1088 Starry Night
after Van Gogh's Painting
40x30 cm, 15³/₄"x11³/₄",
14 ct white Aida, WA



2034 Water Lilies
after C. Monet's Painting
40x30 cm, 15³/₄"x11³/₄",
14 ct white Aida, WA



RIOLIS provides an extensive range of needlework kits catering to diverse preferences, skill levels, and budgets.

Whether your passion lies in floral motifs, animals, landscapes, or depictions of people, we assure you that you'll discover a delightful design perfectly suited to your taste!



2140
Delicate Chrysanthemums
 21x30 cm, 8¼"x11¾",
 14 ct white Aida, MA

2138 Lush Peonies
 21x30 cm, 8¼"x11¾",
 14 ct white Aida, MA



2139 Graceful Hydrangeas
 21x30 cm, 8¼"x11¾", 14 ct white Aida, MA

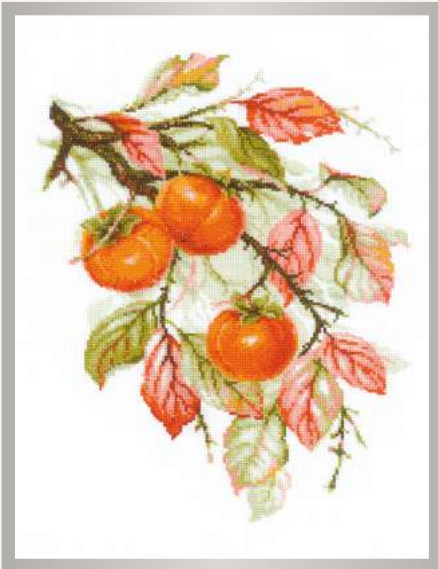




2054 Bright Lemons
30x40 cm, 11 $\frac{3}{4}$ "x15 $\frac{3}{4}$ ",
14 ct white Aida, MA



2070 Amaryllis
30x40 cm, 11 $\frac{3}{4}$ "x15 $\frac{3}{4}$ ",
14 ct white Aida, MA



1988 Sunny Persimmon
30x40 cm, 11 $\frac{3}{4}$ "x15 $\frac{3}{4}$ ",
14 ct white Aida, MA



1938 Juicy Apples
30x40 cm, 11 $\frac{3}{4}$ "x15 $\frac{3}{4}$ ",
14 ct white Aida, MA



1484 Allium

24x30 cm, 9½"x11¾",
14 ct flaxen Aida, WA



2122 Begonia

22x22 cm, 8¾"x8¾",
14 ct flaxen Aida, WA



2131 Mountain Clover

20x20 cm, 7¾"x7¾",
14 ct white Aida, WA



2117

Blooming Flamingo

18x24 cm, 7"x9½",
14 ct white Aida, MA



2148 Tulip Field

40x30 cm, 15¾"x11¾", 14 ct white Aida, WA



2164 Amazing Women. Africa
30x30 cm, 11 $\frac{3}{4}$ "x11 $\frac{3}{4}$ ", 14 ct colored Aida, MA



240 Violets 13x16 cm, 5"x6 $\frac{1}{4}$ ",
15 ct white Aida, WA



241 Lily of the Valley 13x16 cm,
5"x6 $\frac{1}{4}$ ", 15 ct white Aida, WA



2163 Sweet Dreams
30x30 cm, 11 $\frac{3}{4}$ "x11 $\frac{3}{4}$ ",
14 ct white Aida, MA



999 Summer Flowers & Poppies
45x45 cm, 17 $\frac{3}{4}$ "x17 $\frac{3}{4}$ ",
15 ct flaxen Aida, WA



1982 Pepper in a Pot 25x25 cm,
9 $\frac{3}{4}$ "x9 $\frac{3}{4}$ ", 14 ct flaxen Aida, WA



1983 Tomatoes in a Pot 25x25 cm,
9 $\frac{3}{4}$ "x9 $\frac{3}{4}$ ", 14 ct flaxen Aida, WA



**1994 Charming
Gladioli**
20x50 cm, 7 $\frac{3}{4}$ "x19 $\frac{3}{4}$ ",
14 ct white Aida, MA



**2057 Blooming
Roses** 20x50 cm,
7 $\frac{3}{4}$ "x19 $\frac{3}{4}$ ",
14 ct white Aida, MA



1863 Southern Courtyard
30x30 cm, 11 $\frac{3}{4}$ "x11 $\frac{3}{4}$ ", 10 ct white Aida, WA

1984 Strawberries in a Pot
25x25 cm, 9 $\frac{3}{4}$ "x9 $\frac{3}{4}$ ", 14 ct flaxen Aida, WA



1967 Hibiscus 40x50 cm, 15 $\frac{3}{4}$ "x19 $\frac{3}{4}$ ",
10 ct white Aida, WA



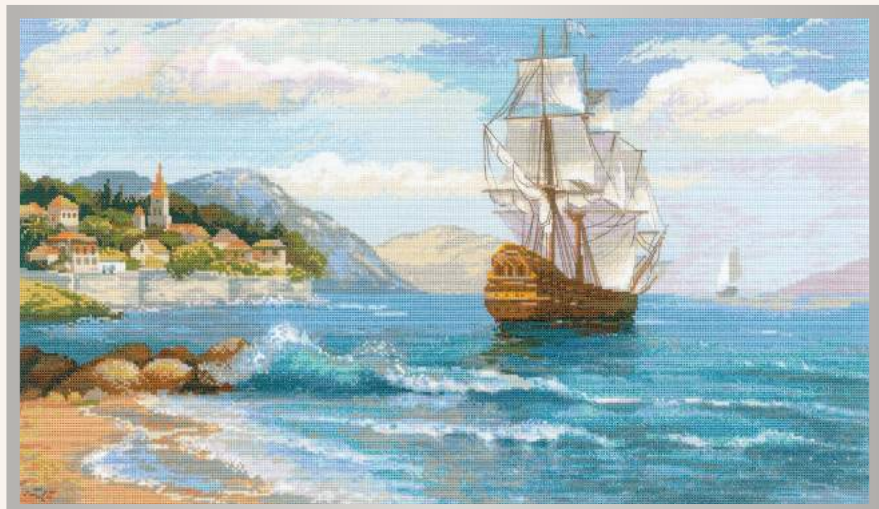
1968 Dahlias 40x50 cm, 15 $\frac{3}{4}$ "x19 $\frac{3}{4}$ ",
10 ct white Aida, WA



2000 Lilies
40x50 cm, 15 $\frac{3}{4}$ "x19 $\frac{3}{4}$ ", 10 ct white Aida,
WA



2135 Generous Grapevine
21x30 cm, 8 $\frac{1}{4}$ "x11 $\frac{3}{4}$ ",
14 ct white Aida, WA



1900 Distant Shores 60x35 cm, 23½"x13¾", 14 ct white Aida, MA



1917 My House 35x35 cm, 13¾"x13¾",
18 ct colored Aida, MA



2047 My Garden 35x35 cm, 13¾"x13¾",
18 ct colored Aida, MA



**2066
Blooming Meadow**
55x25 cm, 21¾"x9¾",
14 ct white Aida, MA



2072 Mountain Village

60x40 cm, 23½"x15¾", 10 ct white Aida, WA

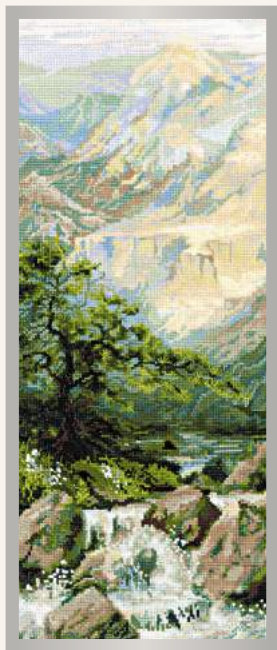


1501 Afternoon in the Country

50x35 cm, 19¾"x13¾", 14 ct white Aida, WA



479 Ship 30x40 cm, 11 $\frac{3}{4}$ "x15 $\frac{3}{4}$ ", 15 ct white Aida, WA



1543 Mountain River
20x50 cm, 7 $\frac{3}{4}$ "x19 $\frac{3}{4}$ ",
14 ct white Aida, MA, WA



1472 At the Fountain
40x30 cm, 15 $\frac{3}{4}$ "x11 $\frac{3}{4}$ ", 14 ct white Aida, MA, T



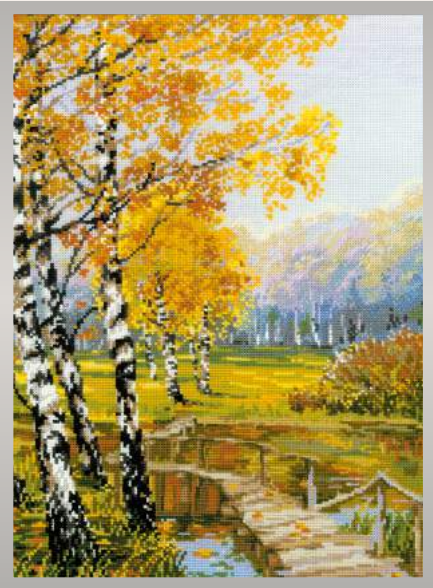
1644 Santorini
40x30 cm, 15 $\frac{3}{4}$ "x11 $\frac{3}{4}$ ", 14 ct white Aida, MA



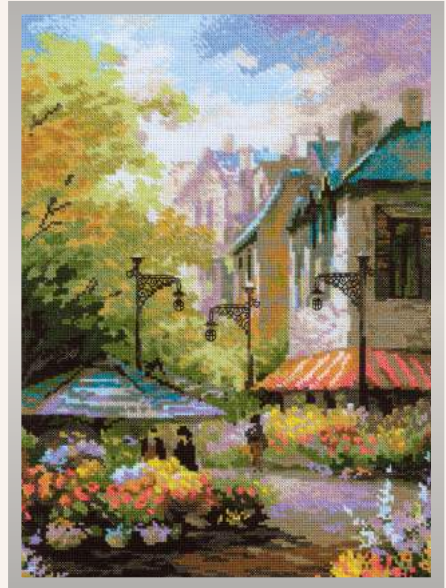
1747 Liguria
40x30 cm, 15 $\frac{3}{4}$ "x11 $\frac{3}{4}$ ", 14 ct white Aida, WA



1155 The Golden Grove 60x40 cm, 23½"x15¾", 10 ct white Aida, WA



1134 The Birches
26x38 cm, 10¼"x15",
14 ct white Aida, WA



1306 Flower Street
26x38 cm, 10¼"x15",
14 ct white Aida, WA



1908 Noise of Waterfall 60x40 cm, 23½"x15¾", 10 ct white Aida, WA



1078 Summer View 38x26 cm,
15"x10¼", 14 ct white Aida, WA



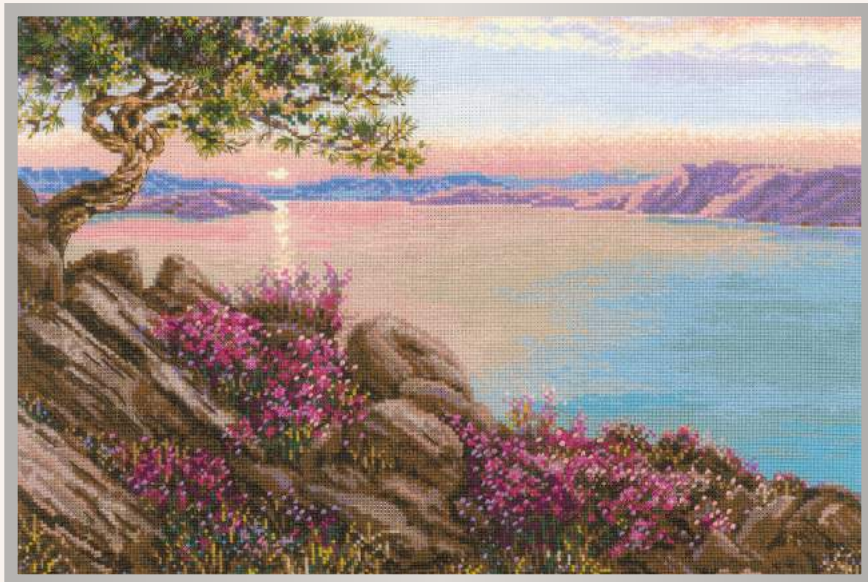
1098 Spring View 38x26 cm,
15"x10¼", 14 ct white Aida, WA



1079 Autumn View 38x26 cm,
15"x10¼", 14 ct white Aida, WA



1080 Winter View 38x26 cm,
15"x10¼", 14 ct white Aida, WA



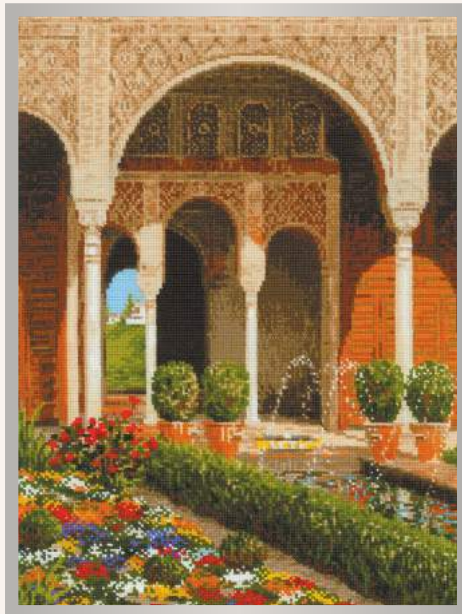
1706 Lake Baikal 60x40 cm, 23½"x15¾", 10 ct white Aida, WA



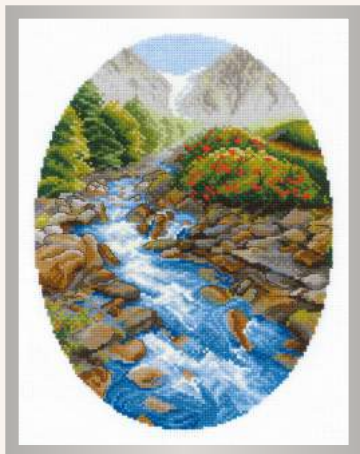
978 Flowering Garden 38x26 cm,
15"x10¼", 15 ct white Aida, WA



989 Winter 38x26 cm, 15"x10¼",
15 ct white Aida, WA



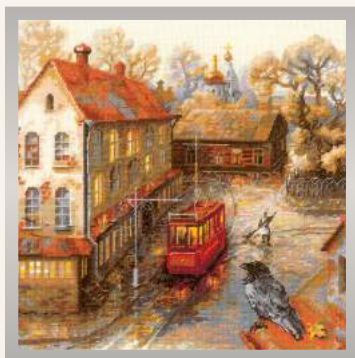
1579 The Palace Garden
30x40 cm, 11¾"x15¾",
14 ct white Aida, WA



1960 Upstream 30x40 cm, 11¾"x15¾",
10 ct white Aida, WA



1978 Autumn Foliage 30x40 cm,
11¾"x15¾", 10 ct white Aida, WA



1676 Warm Autumn 30x30 cm,
11¾"x11¾", 18 ct colored Aida, MA



1677 Rainy Summer 30x30 cm,
11¾"x11¾", 18 ct colored Aida, MA



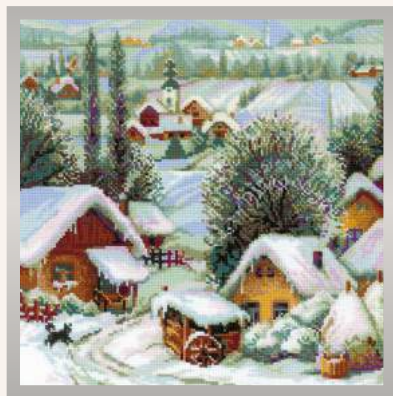
1645 Swallow's Nest
35x60 cm, 13¾"x23½",
14 ct white Aida, WA



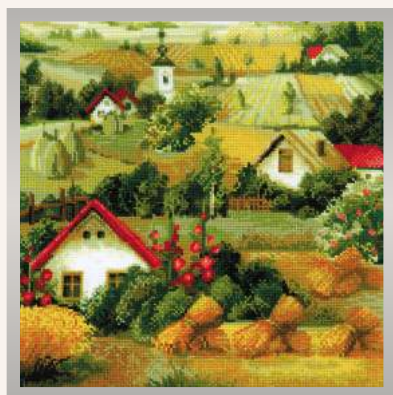
1427 Winter Evening
41x23 cm, 16¼"x9",
14 ct white Aida, MA



1520 Neuschwanstein Castle
35x60 cm, 13¾"x23½",
14 ct white Aida, WA



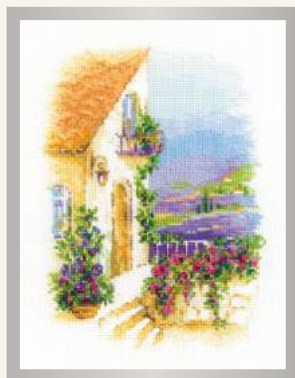
1670 Serbian Village 40x40 cm,
15¾"x15¾", 10 ct white Aida, WA



1569 Serbian Landscape
40x40 cm, 15¾"x15¾", 10 ct white Aida, WA



1604 Path to the Lake 30x24 cm,
11 $\frac{3}{4}$ "x9 $\frac{1}{2}$ ", 10 ct white Aida, WA



1689 Provence Street
18x24 cm, 7"x9 $\frac{1}{2}$ ",
14 ct white Aida, MA, WA, B



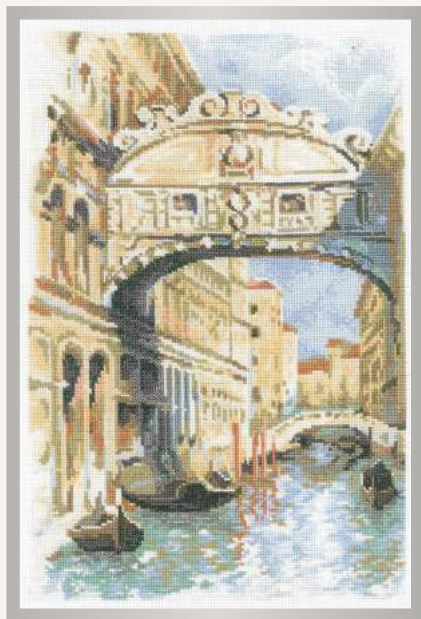
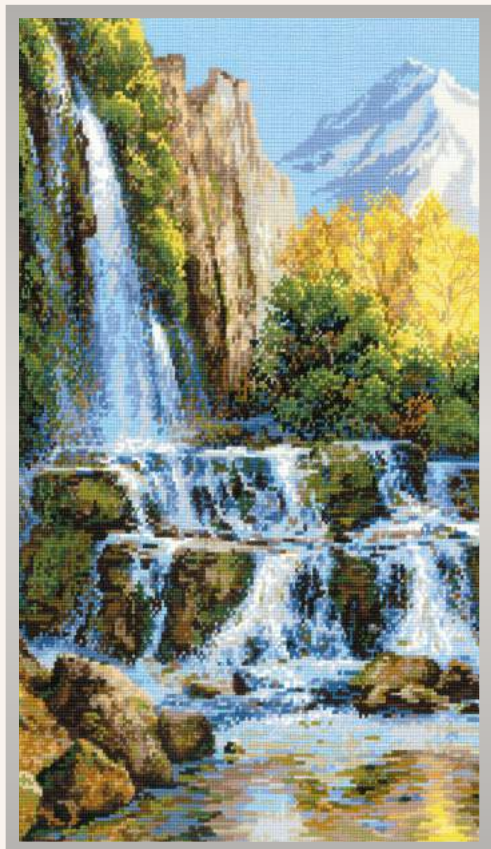
1605 Estuary 30x24 cm,
11 $\frac{3}{4}$ "x9 $\frac{1}{2}$ ", 10 ct white Aida, WA



1691 Farm in Provence
18x24 cm, 7"x9 $\frac{1}{2}$ ",
14 ct white Aida, MA, WA, B



1690 Blooming Provence 55x25 cm, 21 $\frac{3}{4}$ "x9 $\frac{3}{4}$ ", 14 ct white Aida, MA, WA, B



1552 Venice. Bridge of Sighs
26x38 cm, 10¼"x15",
14 ct white Aida, MA

1194
Landscape with Waterfall
40x60 cm, 15¾"x23½",
10 ct white Aida, WA



1845 Country House 40x30 cm, 15¾"x11¼", 14 ct white Aida, WA



2111 Old Photo. Rendezvous
30x40 cm, 11³/₄"x15³/₄",
14 ct white Aida, WA



1611 Old Photo. Waiting
26x38 cm, 10¹/₄"x15",
14 ct white Aida, WA



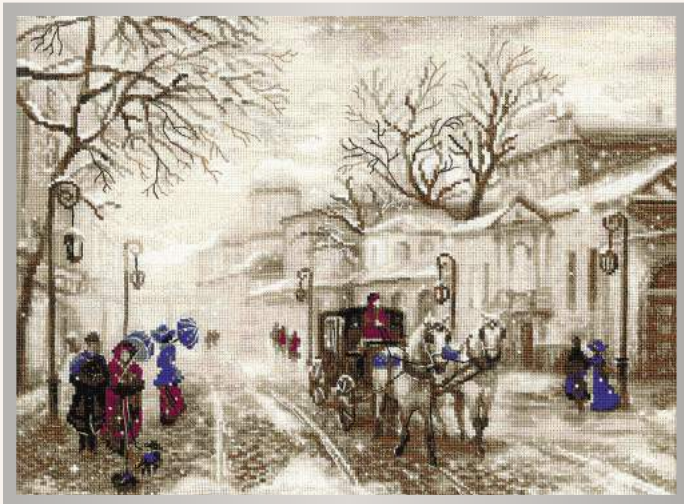
1177 The Beetle
38x26 cm, 15"x10¹/₄", 14 ct white Aida, WA



1277 Old Photo. The Letter
26x38 cm, 10¼"x15",
14 ct white Aida, WA



1434 Old Photo. Riviera
26x38 cm, 10¼"x15",
14 ct white Aida, WA



1400 Old Street
40x30 cm, 15¾"x11¾", 14 ct flaxen Aida, WA



1240 Still Life with Martini 30x30 cm,
11¾"x11¾", 14 ct black Aida, WA, MT



1276 Still Life with Liquor 30x30 cm,
11¾"x11¾", 14 ct black Aida, WA, MT



2055 Orange Mood 30x30 cm,
11¾"x11¾", 14 ct black Aida, MA



1239 Still Life with Red Wine 30x30 cm,
11¾"x11¾", 14 ct black Aida, WA, MT



2024 Lace Peonies 30x24 cm,
11¾"x9½", 14 ct black Aida, MA



1991 Lace Poppies 30x24 cm,
11¾"x9½", 14 ct black Aida, MA, B



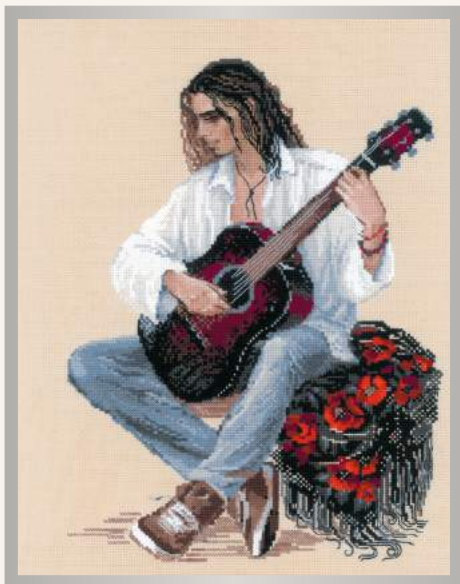
1740 Dancer 30x40 cm, 11¾"x15¾",
14 ct colored Aida, WA, MA



1914 Dancer with a Fan 30x40 cm,
11¾"x15¾", 14 ct colored Aida, MA, WA



1238 Amazon 30x40 cm, 11¾"x15¾",
14 ct black Aida, MA



1766 Guitarist 30x40 cm, 11¾"x15¾",
14 ct colored Aida, WA, MA



2151 Winter Fairy Tale
21x30 cm, 8¼"x11¾",
14 ct black Aida, MA



941 White Orchid
40x40 cm,
15¾"x15¾",
15 ct black Aida,
WA



2124 Magic of Time
21x30 cm, 8¼"x11¾",
14 ct black Aida, MA



2160
Naughty Sparkles
20x20 cm,
7¾"x 7¾",
14 ct black Aida,
WA

SYMBOL OF THE YEAR



2144 Lantern Festival
40x30 cm, 15¾"x11¾",
14 ct black Aida, MA



2157

Holiday Flavour

15x21 cm, 6"x8¼",
14 ct black Aida, WA



2165

Gingerbread Tale

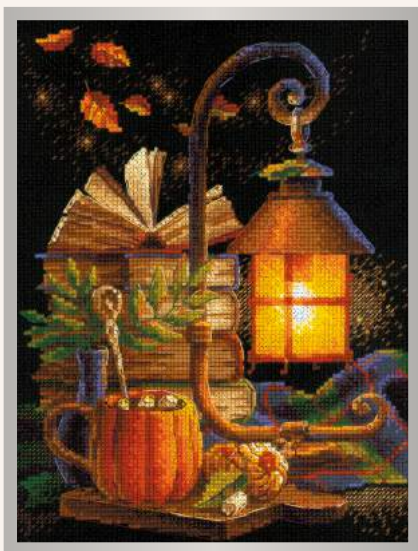
15x21 cm, 6"x8¼",
14 ct black Aida, WA



2123

Rose and Sweet Cherry

15x21 cm, 6"x8¼",
14 ct white Aida, WA



2146 Cozy Autumn

18x24 cm, 7"x9½",
14 ct black Aida, WA



2161

Unicorn Tear

20x20 cm, 7¾"x7¾",
14 ct black Aida, WA



2162

Dragon Eye

20x20 cm, 7¾"x7¾",
14 ct black Aida, WA

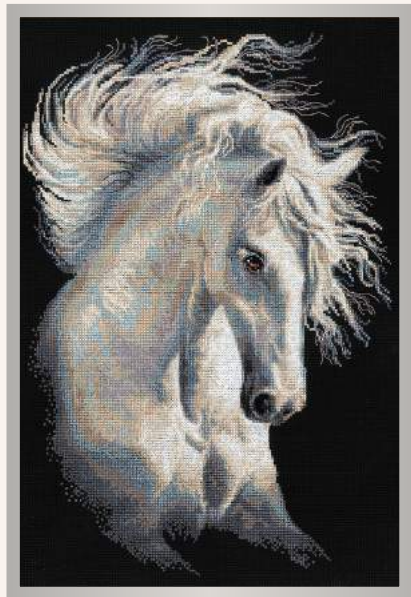
SYMBOL OF THE YEAR



826 Bulat 24x40 cm,
9½"x15¾", 15 ct flaxen Aida, WA



827 Moon 24x40 cm,
9½"x15¾", 15 ct flaxen Aida, WA



1451 Andalusian Character 30x45 cm,
11¾"x17¾", 14 ct black Aida, MA



1494 Breeze Through Mane 30x45 cm,
11¾"x17¾", 14 ct black Aida, MA



1864

Pair of Horses

40x40 cm, 15 $\frac{3}{4}$ "x15 $\frac{3}{4}$ ",
14 ct white Aida, WA



1393

Pair of Wolves

40x40 cm, 15 $\frac{3}{4}$ "x15 $\frac{3}{4}$ ",
10 ct white Aida, WA



1697

Giraffes

22x38 cm, 8 $\frac{3}{4}$ "x15",
10 ct flaxen Aida, WA



1159

Panda with Young

22x38 cm, 8 $\frac{3}{4}$ "x15",
10 ct flaxen Aida, WA



1438

Bear with Cub

22x38 cm, 8 $\frac{3}{4}$ "x15",
10 ct white Aida, WA



1143 Zebras in the Savannah

40x30 cm, 15¾"x11¾", 14 ct flaxen Aida, WA



1068 German Shepherd

24x30 cm, 9½"x11¾",
10 ct flaxen Aida, WA



1144 Elephants in the Savannah


40x30 cm, 15¾"x11¾", 14 ct flaxen Aida, WA



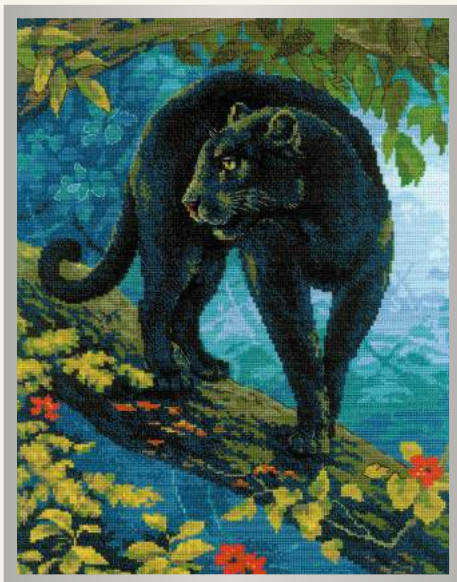
1767 Border Collie

30x40 cm, 11¾"x15¾",
14 ct white Aida, WA



 **1142 Lions in the Savannah**

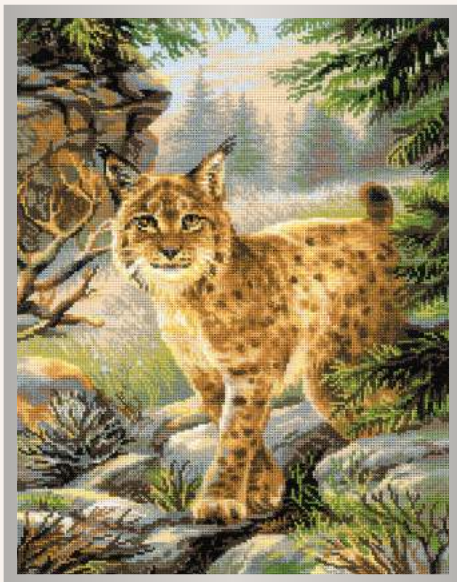
40x30 cm, 15¾"x11¾", 14 ct black Aida, WA



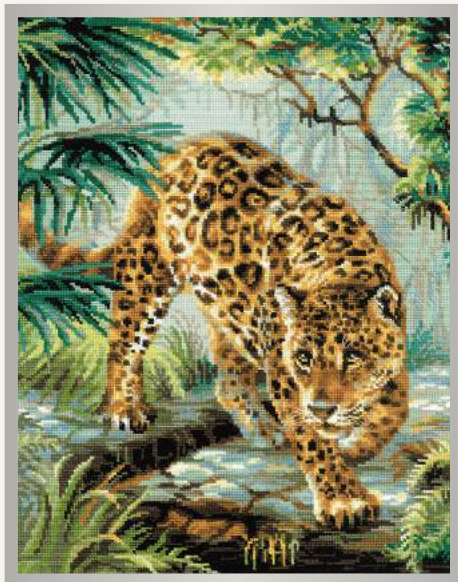
1826 Bagira 30x40 cm, 11 $\frac{3}{4}$ "x15 $\frac{3}{4}$ ",
14 ct white Aida, MA



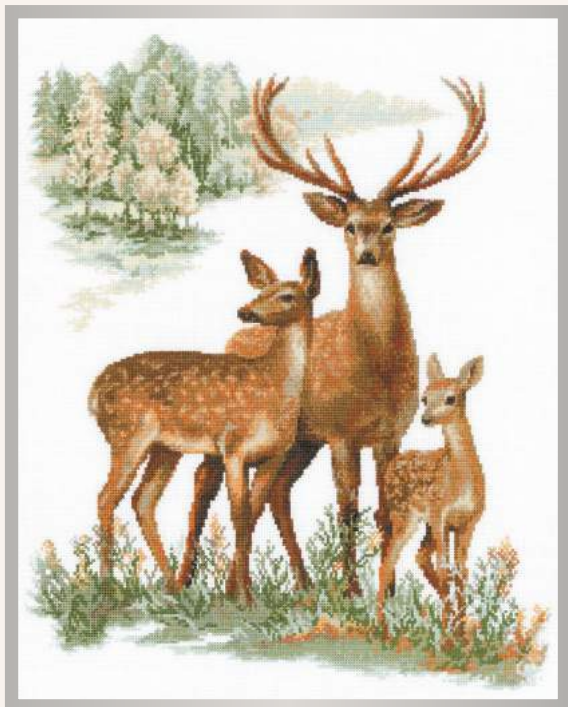
1077 Deer 30x40 cm, 11 $\frac{3}{4}$ "x15 $\frac{3}{4}$ ",
10 ct white Aida, WA



1673 Forest Hostess 30x40 cm,
11 $\frac{3}{4}$ "x15 $\frac{3}{4}$ ",14 ct white Aida, MA



1549 Owner of the Jungle 30x40 cm,
11 $\frac{3}{4}$ "x15 $\frac{3}{4}$ ", 14 ct colored Aida, MA



1370 Deers

40x50 cm, 15 $\frac{3}{4}$ "x19 $\frac{3}{4}$ ", 14 ct white Aida, MA



1578 Basset Hound Puppy

26x38 cm, 10 $\frac{1}{4}$ "x15",
10 ct flaxen Aida, WA



1855 Crocuses under the Snow

30x21 cm, 11 $\frac{3}{4}$ "x8 $\frac{1}{4}$ ",
14 ct white Aida, M, MT



1626 Husky

26x38 cm, 10 $\frac{1}{4}$ "x15",
10 ct colored Aida, WA



1399 Labrador 30x40 cm,
11 $\frac{3}{4}$ "x15 $\frac{3}{4}$ ", 14 ct white Aida, WA



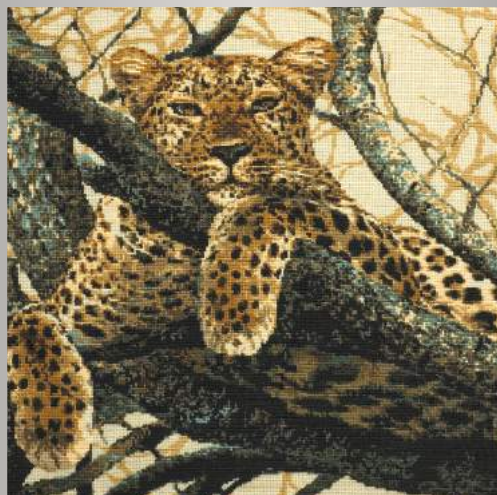
1437 On the Holiday 30x40 cm,
11 $\frac{3}{4}$ "x15 $\frac{3}{4}$ ", 14 ct flaxen Aida, WA



2090 Highland Buddies 30x40 cm,
11 $\frac{3}{4}$ "x15 $\frac{3}{4}$ ", 14 ct colored Aida, MA



1151 Hunting. Spaniel
18x27 cm, 7"x10 $\frac{3}{4}$ ",
14 ct white Aida, WA



937 Leopard 60x60 cm, 23½"x23½",
10 ct flaxen Aida, WA



1599 Maine Coon 21x30 cm, 8¼"x11¾",
10 ct black Aida, WA



766 Grey Cat 21x30 cm, 8¼"x11¾",
10 ct black Aida, WA



2046 Savannah Children 40x30 cm,
15¾"x11¾", 14 ct white Aida, WA



2076 Sons of the Forest 40x30 cm,
15¾"x11¾", 14 ct white Aida, WA



2043 Bear Cubs on Ice 40x30 cm,
15¾"x11¾", 14 ct white Aida, WA



1469 Hedgehogs in Lingonberries
25x25 cm, 9¾"x9¾", 14 ct white Aida, WA



1761 Meerkats 25x25 cm, 9¾"x9¾",
14 ct white Aida, WA



1391 Child's Play 25x25 cm, 9¾"x9¾",
14 ct white Aida, WA



1390 Tender Age 25x25 cm, 9¾"x9¾",
14 ct white Aida, WA



1491 Squirrels 25x25 cm, 9¾"x9¾",
14 ct white Aida, WA



1636 Desert Foxes 25x25 cm, 9¾"x9¾",
14 ct white Aida, WA



1891 Naughty Goat 30x40 cm,
11¾"x15¾", 14 ct colored Aida, MA



2017 Tough Guys 30x40 cm,
11¾"x15¾", 14 ct colored Aida, MA



1807 Geese 30x40 cm,
11¾"x15¾", 14 ct colored Aida, MA



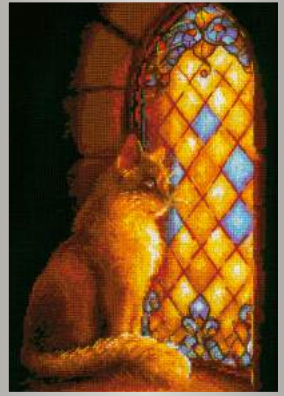
1479 Rooster 30x40 cm,
11¾"x15¾", 14 ct colored Aida, MA



2004 By The Fireplace
21x30 cm, 8¼"x11¾",
14 ct white Aida, WA



2049 Meeting at the Window
21x30 cm, 8¼"x11¾", 14 ct
white Aida, WA



1848 Castle Guardian
21x30 cm, 8¼"x11¾",
14 ct black Aida, WA



1416 Funny Rabbits 40x25 cm, 15¾"x9¾",
14 ct white Aida, WA



1986 Bunny in Flowers
15x18 cm, 6"x7",
14 ct white Aida, WA



1995 Baby Tiger
13x16 cm, 5"x6¼",
10 ct white Aida, WA



2092 Happy Together
18x18 cm, 7"x7",
14 ct white Aida, MA



2093 Forest Dweller 15x18 cm,
6"x7", 14 ct white Aida, WA



2158 True Friend
30x30 cm, 11 $\frac{3}{4}$ "x11 $\frac{3}{4}$ ",
14 ct white Aida, WA



1627 Red Panda
21x30 cm, 8 $\frac{1}{4}$ "x11 $\frac{3}{4}$ ",
14 ct colored Aida, WA



1671 Abyssinian Cats
40x40 cm, 15 $\frac{3}{4}$ "x15 $\frac{3}{4}$ ",
10 ct flaxen Aida, WA, MA, B,
soutage tape, bell



2152
Yorkshire Terrier
25x25 cm, 9 $\frac{3}{4}$ "x9 $\frac{3}{4}$ ",
14 ct white Aida, WA



2118 Siamese Kitten

15x15 cm, 6"x6", 14 ct flaxen Aida, WA



2119 Bengal Kitten

15x15 cm, 6"x6", 14 ct flaxen Aida, WA



2120 Lop-eared Kitten

15x15 cm, 6"x6", 14 ct flaxen Aida, WA



2121 Cornish Rex Kitten

15x15 cm, 6"x6", 14 ct flaxen Aida, WA



1067 Chihuahua 25x25 cm, 9³/₄"x9³/₄",
14 ct white Aida, WA, B

2159 Hey Buddy!

21x30 cm, 8¹/₄"x11³/₄", 18 ct white Aida, MA



1886 Snow Leopard
30x30 cm, 11 $\frac{3}{4}$ "x11 $\frac{3}{4}$ ",
14 ct white Aida, WA



1804 White Mane and Roses
30x40 cm, 11 $\frac{3}{4}$ "x15 $\frac{3}{4}$ ",
14 ct white Aida, WA



2150 Yin and Yang
30x30 cm, 11 $\frac{3}{4}$ "x11 $\frac{3}{4}$ ",
14 ct white Aida, WA, MA



1996 Flight of the Bumblebee
21x30 cm, 8 $\frac{1}{4}$ "x11 $\frac{3}{4}$ ",
14 ct white Aida, WA



2071 Horse Girl
21x30 cm, 8¼"x11¾",
18 ct white Aida, MA



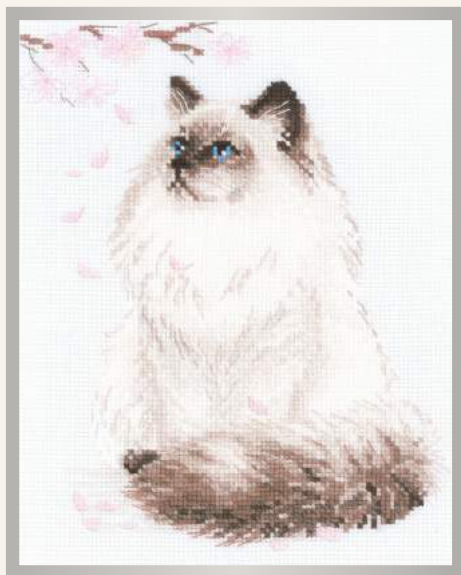
1480 Hen
30x30 cm, 11¾"x11¾",
14 ct colored Aida, MA



2033 Fluffy Sweet Tooth 21x30 cm,
8¼"x11¾", 14 ct white Aida, WA



2082 Cute Koala 21x30 cm,
8¼"x11¾", 14 ct white Aida, WA



1878 Meow-Zen 24x30 cm, 9½"x11¾",
10 ct white Aida, WA



2001 Black Cat 24x30 cm, 9½"x11¾",
10 ct white Aida, WA



1912 Snowy Meow 24x30 cm, 9½"x11¾",
10 ct white Aida, WA



2110 Ginger Meow 24x30 cm, 9½"x11¾",
10 ct white Aida, WA



1328 Canine Family
40x30 cm, 15 $\frac{3}{4}$ "x11 $\frac{3}{4}$ ", 14 ct flaxen Aida, WA



1176 Pug Dog 25x25 cm, 9 $\frac{3}{4}$ "x9 $\frac{3}{4}$ ",
14 ct white Aida, WA



1327 Feline Family
40x30 cm, 15 $\frac{3}{4}$ "x11 $\frac{3}{4}$ ", 14 ct flaxen Aida, WA



906 Dachshund 25x25 cm,
9 $\frac{3}{4}$ "x9 $\frac{3}{4}$ ", 15 ct white Aida, WA



1710 Sheltie 25x25 cm, 9 $\frac{3}{4}$ "x9 $\frac{3}{4}$ ",
14 ct colored Aida, WA



1585 Pomeranian 25x25 cm,
9 $\frac{3}{4}$ "x9 $\frac{3}{4}$ ", 14 ct colored Aida, WA



1248 Pets

40x30 cm, 15 $\frac{3}{4}$ "x11 $\frac{3}{4}$ ", 14 ct flaxen Aida, WA



1247 Furry Friends

40x30 cm, 15 $\frac{3}{4}$ "x11 $\frac{3}{4}$ ", 14 ct flaxen Aida, WA



1066 Thai Cat

38x26 cm, 15"x10 $\frac{1}{4}$ ", 10 ct flaxen Aida, WA



1525

Pet Cat

24x30 cm, 9 $\frac{1}{2}$ "x11 $\frac{3}{4}$ ",
10 ct flaxen Aida, WA



764

Russian Blue

21x30 cm, 8 $\frac{1}{4}$ "x11 $\frac{3}{4}$ ",
10 ct black Aida, WA



1724 Kittens in a Basket

30x24 cm, 11 $\frac{3}{4}$ "x9 $\frac{1}{2}$ ", 14 ct white Aida, WA



1725 Kitten on the Book

30x24 cm, 11 $\frac{3}{4}$ "x9 $\frac{1}{2}$ ", 14 ct white Aida, WA



1811 Cat with Kittens

30x24 cm, 11 $\frac{3}{4}$ "x9 $\frac{1}{2}$ ", 14 ct white Aida, WA



2088 Cat in Flowers

15x18 cm, 6"x7", 14 ct white Aida, WA



1546 Dreamer 20x20 cm, 7 $\frac{3}{4}$ "x7 $\frac{3}{4}$ ",
14 ct colored Aida, WA



1547 Hunter 20x20 cm, 7 $\frac{3}{4}$ "x7 $\frac{3}{4}$ ",
14 ct colored Aida, WA



1471 Free Flight 50x40 cm, 19¾"x15¾", 14 ct white Aida, WA



2132 Winter Guest
10x10 cm, 4"x4",
14 ct flaxen Aida,
WA



1937 Winter River
40x30 cm, 15¾"x11¾", 14 ct white Aida, WA



1692 Plate with Great Tit 30x30 cm,
11¾"x11¾", 14 ct white Aida, MA



1305 Winter Day
40x24 cm, 15¾"x9½", 14 ct white Aida, WA



1693 Plate with Oriole 30x30 cm,
11¾"x11¾", 14 ct white Aida, MA



928 Herons 26x48 cm,
10¼"x19", 14 ct white
Aida, MA



1241 White Owl 45x35 cm, 17¾"x13¾", 14 ct flaxen Aida, WA



1851 Woodpecker 21x30 cm,
8¼"x11¼", 14 ct white Aida, WA



1510 Fox 21x30 cm, 8¼"x11¾",
14 ct colored Aida, WA



2035 Housewarming
19x40 cm, 7½"x15¾",
14 ct white Aida, MA,
wooden hangers



1780 Lovebirds
20x20 cm, 7¾"x7¾",
14 ct white Aida, WA



1925 Blue Jays
20x20 cm, 7¾"x7¾",
14 ct white Aida, WA



767 Peacocks

48x48 cm, 19"x19", 14 ct white Aida, MA



2099 Eastern Fairy Tale

40x30 cm, 15³/₄"x11³/₄", 14 ct colored Aida, MA



1834

Eastern Beauty

19x90 cm, 7¹/₂"x35¹/₂",
14 ct colored Aida, WA,
M, wooden hangers



2096 Red Cardinals

20x20 cm, 7³/₄"x7³/₄",
14 ct white Aida, WA



1905

Tropical Birds


19x90 cm, 7½"x35½",
14 ct colored Aida, WA,
M, wooden hangers



1364 Swans. Prague

45x30 cm, 17¾"x11¾", 14 ct colored Aida, MA



 **2133 White Swan** 30x30 cm,
11¾"x11¾", 10 ct white Aida, WA



1956

Love is in the Air

23x23 cm, 9"x9",
14 ct white Aida, MA



1726 White Swans

25x25 cm, 9¾"x9¾",
14 ct white Aida, MA



1856 White Doves

25x25 cm, 9¾"x9¾",
14 ct white Aida, WA



1869 Lotus Field. Pagoda on the Water 55x25 cm, 21 $\frac{3}{4}$ "x9 $\frac{3}{4}$ ", 14 ct white Aida, MA



1868 Lotus Field. Herons 18x24 cm, 7"x9 $\frac{1}{2}$ ", 14 ct white Aida, MA



1870 Lotus Field. Fisher 18x24 cm, 7"x9 $\frac{1}{2}$ ", 14 ct white Aida, MA



1806 Japanese Cranes 55x25 cm, 21 $\frac{3}{4}$ "x9 $\frac{3}{4}$ ", 14 ct white Aida, MA



1744 Sakura. Fuji 55x25 cm, 21 $\frac{3}{4}$ "x9 $\frac{3}{4}$ ", 14 ct white Aida, MA, B



1743 Sakura. Pagoda 18x24 cm, 7"x9 $\frac{1}{2}$ ", 14 ct white Aida, MA, B



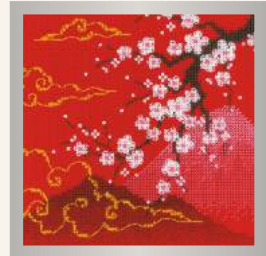
2077 Under Heaven. Cranes
40x25 cm, 15 $\frac{3}{4}$ "x9 $\frac{3}{4}$ ", 14 ct colored Aida, MA



1745 Sakura. Bridge 18x24 cm, 7"x9 $\frac{1}{2}$ ", 14 ct white Aida, MA, B



2079
Under Heaven. Lake
15x15 cm, 6"x6",
14 ct colored Aida, MA



2078
Under Heaven. Hills
15x15 cm, 6"x6",
14 ct colored Aida, MA



1707 Lanterns 24x8 cm, 9½"x3¼" or 3 pcs.: 8x8 cm, 3¼"x3¼", 14 ct colored Aida, MA



814 Winter
20x20 cm, 7¾"x7¾",
15 ct colored Aida,
WA



811 Summer
20x20 cm, 7¾"x7¾",
15 ct colored Aida,
WA



813 Autumn
20x20 cm, 7¾"x7¾",
15 ct colored Aida,
WA



812 Spring
20x20 cm, 7¾"x7¾",
15 ct colored Aida,
WA



1036 Bonsai Kobai Wish of Well Being 35x45 cm, 13¾"x17¾",
14 ct white Aida, WA



1037 Bonsai Matsu Wish of Longevity 35x45 cm, 13¾"x17¾",
14 ct white Aida, WA



1573 Majestic Song 40x40 cm,
15 $\frac{3}{4}$ "x15 $\frac{3}{4}$ ", 14 ct colored Aida, WA



1574 Dancing Fish 40x40 cm,
15 $\frac{3}{4}$ "x15 $\frac{3}{4}$ ", 14 ct colored Aida, WA



898 Pink Roses on Lattice
35x55 cm, 13 $\frac{3}{4}$ "x21 $\frac{3}{4}$ ",
15 ct colored Aida, MA



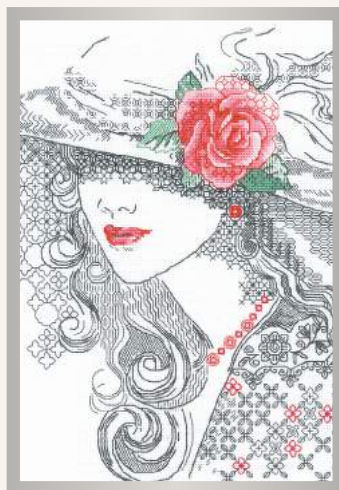
603 Bunch of Lilacs 20x20 cm,
7 $\frac{3}{4}$ "x7 $\frac{3}{4}$ ", 15 ct white Aida, WA



835 Pansies 20x20 cm,
7 $\frac{3}{4}$ "x7 $\frac{3}{4}$ ", 15 ct white Aida, WA



1941 Colorful Flight
30x30 cm, 11 $\frac{3}{4}$ "x11 $\frac{3}{4}$ ", 14 ct white Aida, MA



1887 Mysterious Rose 21x30 cm,
8 $\frac{1}{4}$ "x11 $\frac{3}{4}$ ", 14 ct white Aida, MA



1945 The Joy of Summer
20x20 cm, 7 $\frac{3}{4}$ "x7 $\frac{3}{4}$ ",
14 ct white Aida, MA



1946 The Lightness of Spring
20x20 cm, 7 $\frac{3}{4}$ "x7 $\frac{3}{4}$ ",
14 ct white Aida, MA



1915 White Lilies
20x20 cm, 7 $\frac{3}{4}$ "x7 $\frac{3}{4}$ ",
14 ct white Aida, MA



1916 Red Rose Hip
20x20 cm, 7 $\frac{3}{4}$ "x7 $\frac{3}{4}$ ",
14 ct white Aida, MA



1550 Blackberry
19x48 cm, 7 $\frac{1}{2}$ "x19",
14 ct flaxen Aida, WA,
M, wooden hangers



1852 Thistle

30x30 cm 11 $\frac{3}{4}$ "x11 $\frac{3}{4}$ ", 10 ct white Aida, WA



1913 Bouquet with Lagurus and Cotton 25x25 cm, 9 $\frac{3}{4}$ "x9 $\frac{3}{4}$ ",
14 ct flaxen Aida, WA



1947 Bouquet with Eustoma and Gypsophila 25x25 cm,
9 $\frac{3}{4}$ "x9 $\frac{3}{4}$ ", 14 ct flaxen Aida, WA



1551 Strawberry

19x48 cm, 7 $\frac{1}{2}$ "x19",
14 ct flaxen Aida, WA,
M, wooden hangers



1446

Bouquet of Gladioli

26x48 cm, 10 $\frac{1}{4}$ "x19",
14 ct white Aida, WA



1998 Rainbow Beauty

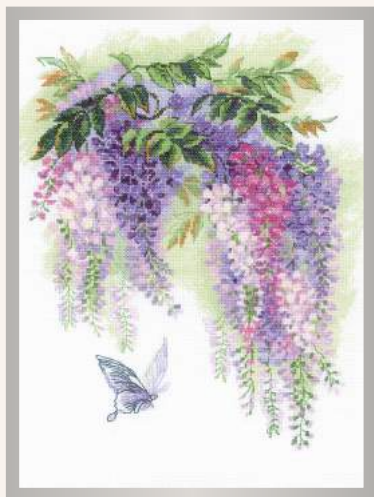
25x25 cm, 9 $\frac{3}{4}$ "x9 $\frac{3}{4}$ ",
14 ct white Aida, MA



900 The Smell of Spring
45x45 cm, 17³/₄"x17³/₄",
15 ct white Aida, WA



2030 Lilac Blossoms 40x40 cm,
15³/₄"x15³/₄", 10 ct white Aida, WA



1672 Wisteria
30x40 cm, 11³/₄"x15³/₄",
14 ct white Aida, WA



1533 Lilacs after the Rain 45x45 cm,
17³/₄"x17³/₄", 10 ct colored Aida, WA



583 Cosmos 30x21 cm,
11³/₄"x8¹/₄", 15 ct flaxen Aida, WA



1071

Irises in Vase

45x45 cm, 17³/₄"x17³/₄",
14 ct white Aida, WA



1854 Tree Peony 40x40 cm,
15³/₄"x15³/₄", 10 ct white Aida, WA



1447

Gentle Lilac

24x30 cm, 9¹/₂"x11³/₄",
14 ct colored Aida, MA



1169 White Lilies 45x45 cm, 17³/₄"x17³/₄",
14 ct white Aida, WA



807 Dandelions

30x21 cm, 11³/₄"x8¹/₄", 15 ct flaxen Aida, WA



841 Irises
20x92 cm, 7¾"x36¼",
15 ct black Aida, WA



842 Daffodils
20x92 cm, 7¾"x36¼",
15 ct black Aida, WA



1612 Mallow
19x90 cm, 7½"x35½",
14 ct black Aida, WA,
MA, wooden hangers



1629 Foxgloves
19x90 cm, 7½"x35½",
14 ct black Aida,WA,
MA, wooden hangers



1866
Flower Assortment
19x90 cm, 7½"x35½",
14 ct white Aida, WA,
M, wooden hangers



1801 Clematis
19x90 cm, 7½"x35½",
14 ct white Aida, WA,
M, wooden hangers



1057 Poppies 25x50 cm,
9 $\frac{3}{4}$ "x19 $\frac{3}{4}$ ", 10 ct black Aida, WA



1867 Wedding Bouquet 25x25 cm,
9 $\frac{3}{4}$ "x9 $\frac{3}{4}$ ", 14 ct white Aida, MA



1259 Peonies in a Vase
40x40 cm, 15 $\frac{3}{4}$ "x15 $\frac{3}{4}$ ",
10 ct white Aida, WA



2026 Hydrangea Garden
30x40 cm, 11 $\frac{3}{4}$ "x15 $\frac{3}{4}$ ", 14 ct white Aida, MA



1056 Sunflowers 25x50 cm,
9¾"x19¾", 10 ct black Aida, WA



1973 Autumn Flowers
30x24 cm, 11¼"x9½",
14 ct white Aida, WA



2006 Hello Autumn
25x25 cm, 9¾"x9¾", 14 ct white Aida, MA



1974 Purple Allium
21x30 cm, 8¼" x 11¾",
14 ct white Aida, WA



1351 White Briar
21x30 cm, 8¼"x11¾",
14 ct flaxen Aida, WA



924 Wildflowers
45x45 cm, 17¾"x17¾", 15 ct flaxen Aida, WA



582 Bouquet of Camomiles
21x30 cm, 8¼"x11¾",
15 ct flaxen Aida, WA



1751 Cottage Garden.
Winter
20x30 cm, 7¾"x11¾",
14 ct flaxen Aida,
WA, M, wooden hanger



1656 Cottage Garden.
Spring
20x30 cm, 7¾"x11¾",
14 ct flaxen Aida,
WA, M, wooden hanger



809 May Wild Rose
21x30 cm, 8¼"x11¾",
15 ct flaxen Aida, WA



1384 Dahlias
45x45 cm, 17¾"x17¾", 14 ct colored Aida, WA



808 Wild Poppies
21x30 cm, 8¼"x11¾",
15 ct flaxen Aida, WA



**1847 Cottage Garden.
Summer** 20x30 cm,
7¾"x11¾", 14 ct flaxen
Aida, WA, MT, MA,
wooden hanger



**1657 Cottage Garden.
Autumn**
20x30 cm, 7¾"x11¾",
14 ct flaxen Aida,
WA, M, wooden hanger



1773 Bouquet with Asters 40x40 cm, 15³/₄"x15³/₄",
14 ct colored Aida, WA



1020 Bunch of Pansies
24x30 cm, 9¹/₂"x11³/₄",
14 ct flaxen Aida, WA, T



1403 Snowdrops 20x20 cm,
7³/₄"x7³/₄", 14 ct colored Aida, MA, T



2003 Tulips Hat Box 20x20 cm,
7³/₄"x7³/₄", 14 ct white Aida, WA



1515 Globe Flower 20x20 cm,
7³/₄"x7³/₄", 14 ct flaxen Aida, WA



1516 Pansy Medley 20x20 cm,
7³/₄"x7³/₄", 14 ct flaxen Aida, WA



1782
Tiger Lilies
25x33 cm, 9¾"x13",
18 ct colored Aida, MA



776
Sunflowers
40x40 cm, 15¾"x15¾",
10 ct flaxen Aida, WA



1775
Pink Poppies
25x33 cm, 9¾"x13",
18 ct colored Aida, MA



1065
Tulips
30x24 cm, 11¾"x9½",
14 ct flaxen Aida, WA



1448 Basket with Raspberries 30x30 cm,
11¾"x11¾", 10 ct flaxen Aida, WA



1449 Garden Strawberry 30x30 cm,
11¾"x11¾", 10 ct flaxen Aida, WA



1450 Ripe Apples 30x30 cm,
11¾"x11¾", 10 ct flaxen Aida, WA



1545 Stump with Fly Agaric 30x30 cm,
11¾"x11¾", 10 ct flaxen Aida, WA



1765 Chamomiles 30x30 cm, 11¾"x11¾",
10 ct white Aida, WA



1790 Carpathians Bells 30x30 cm,
11¾"x11¾", 10 ct white Aida, WA



1467 Watercolor Jasmine 30x30 cm,
11¾"x11¾", 14 ct white Aida, MA



1335 Watercolor Roses 30x30 cm,
11¾"x11¾", 14 ct white Aida, MA



1820 Watercolor Dahlias 30x30 cm,
11¾"x11¾", 14 ct white Aida, MA



1846 Watercolor Carnations 30x30 cm,
11¾"x11¾", 14 ct white Aida, MA



1069 Watercolor Phlox 30x30 cm,
11¾"x11¾", 14 ct white Aida, MA



1485 Watercolor Gerberas 30x30 cm,
11¾"x11¾", 14 ct white Aida, MA



2086 Bouquet with Physalis
21x30 cm, 8¼"x11¾",
14 ct white Aida, WA



2087 Umbrella Wreath
24x30 cm, 9½"x11¾",
14 ct flaxen Aida, WA



1615 Mimosa
18x24 cm, 7"x9½",
14 ct flaxen Aida, WA



2102 Blue Irises
30x30 cm, 11¾"x11¾",
14 ct colored Aida, MA



2020 Summer Tea
24x30 cm, 9½"x11¾",
14 ct flaxen Aida, WA



1658 Welcome!
21x30 cm, 8¼"x11¾",
14 ct flaxen Aida, WA



2080 Fire Poppies
40x40 cm, 15¾"x15¾",
10 ct white Aida, WA



2097 Lily and Lime
15x21 cm, 6"x8¼",
14 ct white Aida, WA



1816 Peonies and Wild Roses

30x40 cm, 11 $\frac{3}{4}$ "x15 $\frac{3}{4}$ ", 18 ct colored Aida, MA



1798

Calendula

10x30 cm,
4"x11 $\frac{3}{4}$ ",
18 ct colored
Aida, MA

1962 Light Breeze 15x15 cm, 6"x6",
14 ct Aida white, M, WA



1969 Lucky Clover

15x15 cm, 6"x6",
14 ct Aida white, WA, M



2067

Poppies and Daisies

19x90 cm, 7 $\frac{1}{2}$ "x35 $\frac{1}{2}$ ",
14 ct flaxen Aida, MA,
wooden hangers



2069 Forest Lily of the Valley 25x25 cm,
9³/₄"x9³/₄", 14 ct flaxen Aida, WA



2059 Astilbe 25x25 cm, 9³/₄"x9³/₄",
14 ct flaxen Aida, WA



1502 Yellow Rapeseed 25x25 cm,
9³/₄"x9³/₄", 14 ct flaxen Aida, WA



1478 Daisies 25x25 cm, 9³/₄"x9³/₄",
14 ct flaxen Aida, WA



1819 The Branch of Cydonia
16x13 cm, 6¹/₄"x5", 14 ct white Aida, MA



**1818 The Branch of
Sakura**
13x16 cm, 5"x6¹/₄",
14 ct white Aida, MA



1910 Gingerbread Wreath 30x30 cm,
11 $\frac{3}{4}$ "x11 $\frac{3}{4}$ ", 14 ct white Aida, MA



1537 Wreath with Wheat 30x30cm,
11 $\frac{3}{4}$ "x11 $\frac{3}{4}$ ", 14 ct white Aida, MA



1603 Wreath with Blue Spruce 30x30 cm,
11 $\frac{3}{4}$ "x11 $\frac{3}{4}$ ", 14 ct white Aida, MA



1536 Wreath with Bird Cherry 30x30cm,
11 $\frac{3}{4}$ "x11 $\frac{3}{4}$ ", 14 ct white Aida, MA



1456 Wreath with Fireweed 30x30 cm,
11 $\frac{3}{4}$ "x11 $\frac{3}{4}$ ", 14 ct white Aida, MA, T



1881 Compass 30x30 cm, 11 $\frac{3}{4}$ "x11 $\frac{3}{4}$ ",
14 ct white Aida, WA



1389 Asters 30x40 cm, 11 $\frac{3}{4}$ "x15 $\frac{3}{4}$ ",
14 ct white Aida, MA



1163 Lilac Orchid
21x30 cm, 8 $\frac{1}{4}$ "x11 $\frac{3}{4}$ ",
14 ct white Aida, MA



1404 French Lavender
25x25 cm, 9 $\frac{3}{4}$ "x9 $\frac{3}{4}$ ",
14 ct flaxen Aida, WA



1827 Juicy Peach
40x30 cm, 15 $\frac{3}{4}$ "x11 $\frac{3}{4}$ ", 14 ct colored Aida, MA



1324 Scottish Heather
25x25 cm, 9 $\frac{3}{4}$ "x9 $\frac{3}{4}$ ", 14 ct flaxen Aida, WA



1463 Sweet William 24x30 cm,
9½"x11¾", 14 ct flaxen Aida, WA



2115 In the Garden
40x30 cm, 15¾"x11¾", 14 ct white Aida, WA, MA



1669 Windowsill with Flowers
40x25 cm, 15¾"x9¾", 14 ct white Aida, WA, MA



**1762 Daffodils on the
Windowsill**
25x25 cm, 9¾"x9¾",
14 ct white Aida, WA, MA



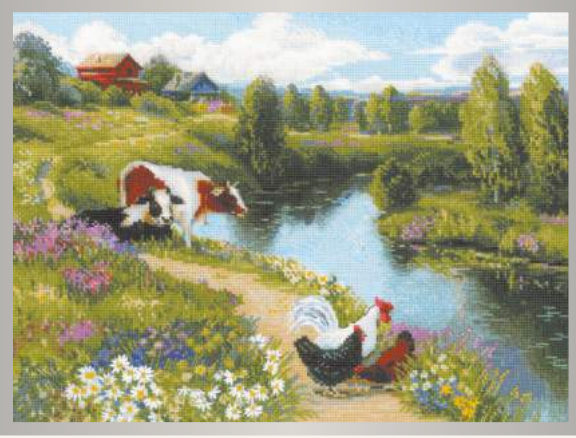
1556 Marigolds
20x20 cm, 7¾"x7¾",
14 ct flaxen Aida, WA



1557 Bellflower
20x20 cm, 7¾"x7¾",
14 ct flaxen Aida, WA



1496 Forget Me Nots
20x20 cm, 7¾"x7¾",
14 ct flaxen Aida, WA



2101 By the River 40x30 cm,
15³/₄"x11³/₄", 14 ct white Aida, WA



2091 Violets in a Pot
22x22 cm, 8³/₄"x8³/₄",
14 ct flaxen Aida, MA



**1763 Crocuses on the
Windowsill**
25x25 cm, 9³/₄"x9³/₄",
14 ct white Aida, WA, MA



1544 Rich Harvest 40x30 cm,
15³/₄"x11³/₄", 10 ct flaxen Aida, WA



1497 Lily of the Valley
20x20 cm, 7³/₄"x7³/₄",
14 ct flaxen Aida, WA



1824 Merci
20x20 cm, 7³/₄"x7³/₄",
14 ct white Aida, WA



1825 Bonjour
20x20 cm, 7³/₄"x7³/₄",
14 ct white Aida, WA



1717 Herbs

30x24 cm, 11 $\frac{3}{4}$ "x9 $\frac{1}{2}$ ", 14 ct flaxen Aida, WA



2037 Gifts of Autumn

30x24 cm, 11 $\frac{3}{4}$ "x9 $\frac{1}{2}$ ", 14 ct flaxen Aida, WA



1607 Bouquet with Lavender

15x18 cm, 6"x7", 14 ct white Aida, MA



1576 Bouquet with Cornflowers

15x18 cm, 6"x7", 14 ct white Aida, MA



1606 Bouquet with Sweet Peas

15x18 cm, 6"x7", 14 ct white Aida, MA

1794 Spicy Condiments

30x24 cm, 11 $\frac{3}{4}$ "x9 $\frac{1}{2}$ ",
14 ct flaxen Aida, WA



1696 Hydrangea 35x30 cm,
13³/₄"x11³/₄", 14 ct white Aida, MA



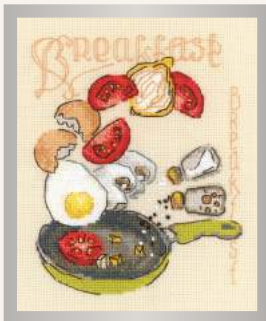
1931 Floral Charm 30x30 cm,
11³/₄"x11³/₄", 14 ct white Aida, MA



1722 Basket with Roses
35x30 cm, 13³/₄"x11³/₄", 14 ct white Aida, MA



1659 Dutch Still Life 30x30 cm,
11³/₄"x11³/₄", 14 ct black Aida, WA



1684 Breakfast 15x18 cm,
6"x7", 14 ct colored Aida,
WA



1685 Lunch 15x18 cm, 6"x7",
14 ct colored Aida, WA



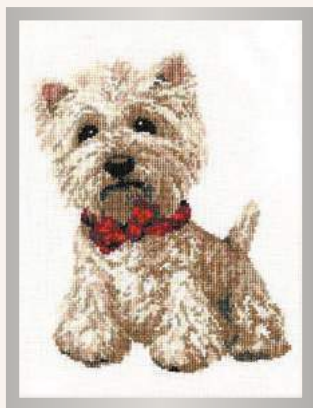
1686 Dinner 15x18 cm, 6"x7",
14 ct colored Aida, WA



1398 Fuchsia
40x30 cm, 15³/₄"x11³/₄", 14 ct white Aida, WA, B



2106 Old Tram 21x30 cm,
8¹/₄"x11³/₄", 14 ct flaxen Aida, WA



945 West Highland White
20x26 cm, 7³/₄"x10¹/₄",
15 ct white Aida, WA



2012 Quiet Morning
40x30 cm, 15³/₄"x11³/₄", 14 ct white Aida, MA



**2008
At The
Beach**
20x20 cm,
7³/₄"x7³/₄",
18 ct white
Aida, MA




**2013
Jetset
Living**
20x20 cm,
7³/₄"x7³/₄",
18 ct white
Aida, MA



1561 Freesia

40x30 cm, 15 $\frac{3}{4}$ "x11 $\frac{3}{4}$ ", 14 ct white Aida, WA, B

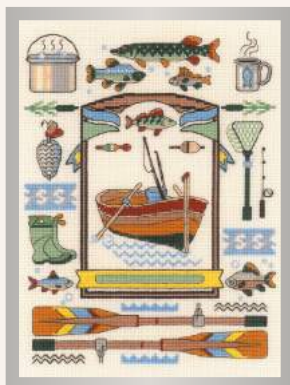


 **2125 Aim High** 20x30 cm,
7 $\frac{3}{4}$ "x11 $\frac{3}{4}$ ", 14 ct flaxen Aida, WA,
wooden hanger



1951 Favorite Hobby

18x24 cm, 7"x9 $\frac{1}{2}$ ",
18 ct colored Aida,
MA



2050 Good Catch

18x24 cm, 7"x9 $\frac{1}{2}$ ",
18 ct colored Aida,
MA



1618 Pink Pomegranate

40x30 cm, 15 $\frac{3}{4}$ "x11 $\frac{3}{4}$ ",
14 ct colored Aida, MA



1873 Tea Time 30x21 cm, 11 $\frac{3}{4}$ "x8 $\frac{1}{4}$ ",
14 ct flaxen Aida, 18 ct colored Aida, WA



1874 Coffee Time 30x21 cm, 11 $\frac{3}{4}$ "x8 $\frac{1}{4}$ ",
14 ct flaxen Aida, 18 ct colored Aida, WA



990 Blackberries
26x20 cm, 10 $\frac{1}{4}$ "x7 $\frac{3}{4}$ ", 15 ct flaxen Aida, WA



1952 Paris Roofs
15x31 cm, 6"x12 $\frac{1}{4}$ ",
14 ct white Aida, MA,
wooden hanger



1992 New York at Night
15x31 cm, 6"x12 $\frac{1}{4}$ ",
14 ct black Aida, MA,
wooden hanger



1121 Coffee
30x24 cm, 11 $\frac{3}{4}$ "x9 $\frac{1}{2}$ ",
14 ct flaxen Aida, WA



1122 Tea
30x24 cm, 11 $\frac{3}{4}$ "x9 $\frac{1}{2}$ ",
14 ct flaxen Aida, WA



1953 Pisa Roofs
15x31 cm, 6"x12 $\frac{1}{4}$ ",
14 ct white Aida, MA,
wooden hanger



1993 London at Night
15x31 cm, 6"x12 $\frac{1}{4}$ ",
14 ct black Aida, MA,
wooden hanger



2068 Still Life with Chrysanthemums
50x40 cm, 19¾"x15¾", 14 ct black Aida, MA



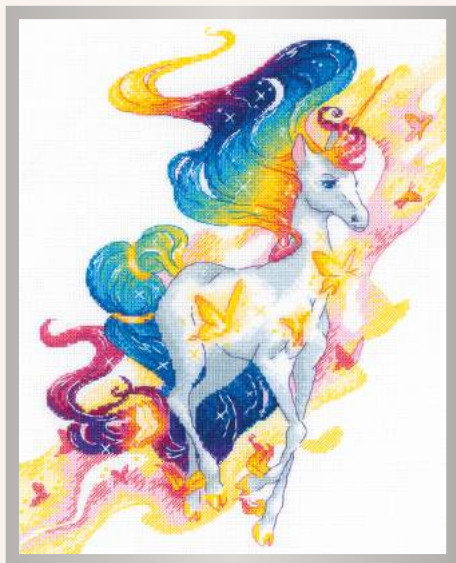
1892 Night Magic
10x30 cm, 4"x11¾", 14 ct black Aida, WA



1003 Morning in the Country
21x30 cm, 8¼"x11¾", 14 ct white Aida, MA



1462 Tree of Desires
21x30 cm, 8¼"x11¾", 14 ct white Aida, WA, T



1939 Fairy Unicorn 24x30 cm, 9½"x11¾",
14 ct white Aida, MA



1943 Goldfishes 24x30 cm, 9½"x11¾",
14 ct white Aida, MA



**1476
Raspberry Tea**
20x20 cm,
7¾"x7¾",
14 ct colored
Aida, MA,
MT, B



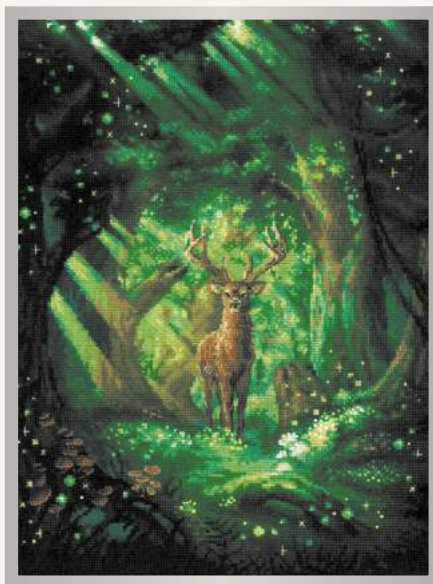
**1477 Tea with
Lemon**
20x20 cm,
7¾"x7¾",
14 ct colored
Aida, MA, MT



1455 Grapevine
21x30 cm, 8¼"x11¾",
14 ct colored Aida, WA



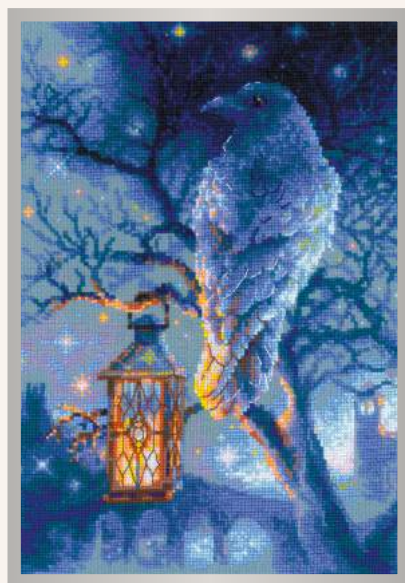
2127 Your Mighty Dragon 30x40 cm,
11¾"x15¾", 14 ct white Aida, MA



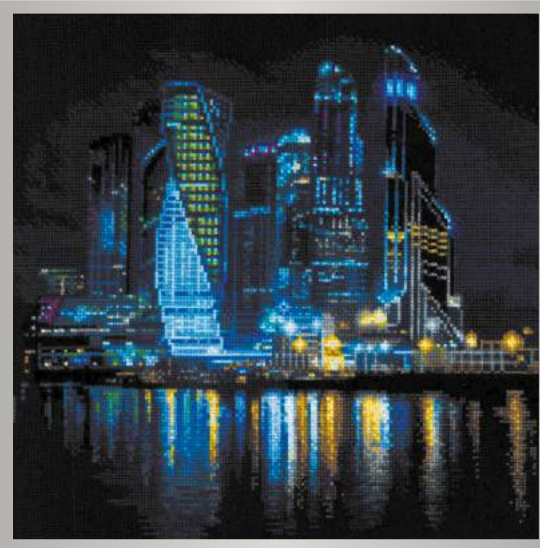
2116 Forest Spirit 30x40 cm, 11¾"x15¾",
14 ct black Aida, WA



1875 Ice-Cold Wind
21x30 cm, 8¼"x11¾",
14 ct colored Aida, WA



1876 Wise Raven
21x30 cm, 8¼"x11¾",
14 ct colored Aida, WA



2075 Night City
30x30 cm, 11¾"x11¾", 14 ct black Aida, WA



1872 Magic Owl 21x30 cm,
8¼"x11¾", 14 ct colored Aida, WA



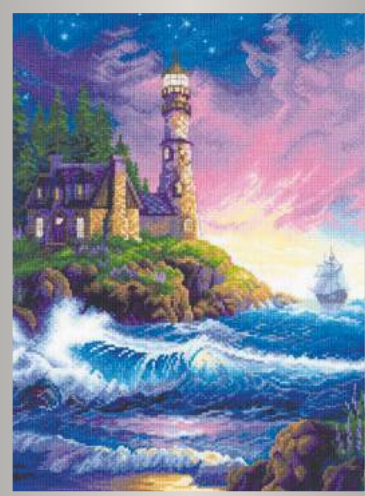
1921 The Great Bear
30x40 cm, 11¾"x15¾",
14 ct white Aida, WA



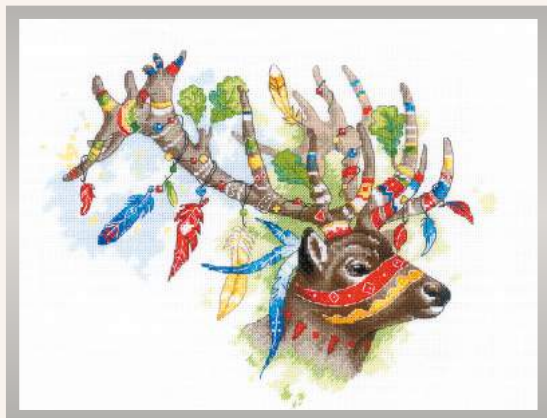
2062 Pegasus Constellation
30x40 cm, 11¾"x15¾",
14 ct white Aida, WA



2039 Other Worlds 40x40 cm, 15¾"x15¾",
14 ct white Aida, WA



2022 Lighthouse
30x40 cm, 11¾"x15¾",
14 ct white Aida, MA



1940 Noble Deer
33x25 cm, 13"x9¾",
14 ct white Aida, MA



2014 Straight to the Stars
24x30 cm, 9½"x11¾",
18 ct white Aida, MA



1814 Good Luck 15x18 cm,
6"x7", 14 ct white Aida, MA



2023 The Era of Dinosaurs
40x40 cm, 15 $\frac{3}{4}$ "x15 $\frac{3}{4}$ ",
14 ct white Aida, MA



1821 Fragrant Freesia
25x33 cm, 9 $\frac{3}{4}$ "x13",
18 ct colored Aida, MA



2015 Magic Lessons
24x30 cm, 9 $\frac{1}{2}$ "x11 $\frac{3}{4}$ ",
18 ct white Aida, MA

1787 Llama 15x18 cm, 6"x7",
10 ct white Aida, WA



1944 Thorny Tribe
20x20 cm, 7 $\frac{3}{4}$ "x7 $\frac{3}{4}$ ",
14 ct white Aida, MA



1890 Alpaca
15x31 cm, 6"x12 $\frac{1}{4}$ ",
14 ct flaxen Aida,
WA, wooden
hanger



1333 Sweet Tooth 30x30 cm,
11 $\frac{3}{4}$ "x11 $\frac{3}{4}$ ", 14 ct white Aida, WA, T



2058 Stitching Time 30x30 cm,
11 $\frac{3}{4}$ "x11 $\frac{3}{4}$ ", 14 ct white Aida, MA



1781 Girl with Ducklings 30x30 cm,
11 $\frac{3}{4}$ "x11 $\frac{3}{4}$ ", 14 ct white Aida, WA, T



1470 Let's go Fishing 30x30 cm,
11 $\frac{3}{4}$ "x11 $\frac{3}{4}$ ", 14 ct white Aida, WA, T



1720 Under My Umbrella 25x25 cm,
9 $\frac{3}{4}$ "x9 $\frac{3}{4}$ ", 14 ct white Aida, MA, WA



1719 Holiday by the Sea 24x18 cm,
9 $\frac{1}{2}$ "x7", 14 ct white Aida, WA



2089 A Floral Trip 21x30 cm,
8¼"x11¾", 14 ct white Aida, WA



1458 Carousel 35x35 cm, 13¾"x13¾",
14 ct colored Aida, WA, MA



2104 Love is in the Air 21x30 cm,
8¼"x11¾", 14 ct white Aida, MA



2126 The Tastiest Bite
30x21 cm, 11¾"x8¼", 14 ct white Aida, WA



2113 Go left 30x21 cm,
11¾"x8¼", 14 ct white Aida, WA



1817 Angelique
30x40 cm, 11 $\frac{3}{4}$ "x15 $\frac{3}{4}$ ",
14 ct white Aida, MA



1789 Stitching Lessons
30x40 cm, 11 $\frac{3}{4}$ "x15 $\frac{3}{4}$ ",
14 ct white Aida, MA




1764 Romance 25x25 cm, 9 $\frac{3}{4}$ "x9 $\frac{3}{4}$ ",
14 ct white Aida, MA, T, B



2019 Dreamer 25x25 cm,
9 $\frac{3}{4}$ "x9 $\frac{3}{4}$ ", 14 ct white Aida, MA, B



1791 Afternoon Tea Club 21x30 cm,
8 $\frac{1}{4}$ "x11 $\frac{3}{4}$ ", 18 ct colored Aida, MA

 **1932 Happily Ever After**
20x20 cm, 7³/₄"x7³/₄",
14 ct white Aida, MA



1488 Hot Summer 40x30 cm, 15³/₄"x11³/₄",
14 ct white Aida, WA



1972 Mon amour
20x20 cm, 7³/₄"x7³/₄",
14 ct white Aida, WA



1723 Rococo. Stroll 25x33 cm,
9³/₄"x13", 18 ct colored Aida, MA



1792 Book Club 21x30 cm, 8¹/₄"x11³/₄",
18 ct colored Aida, MA



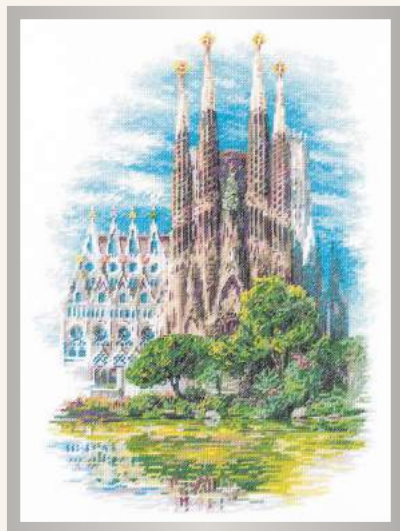
1788 The Underwater Kingdom 40x30 cm,
15 $\frac{3}{4}$ "x11 $\frac{3}{4}$ ", 14 ct white Aida, WA, MA



2114 Garden Swing 21x30 cm,
8 $\frac{1}{4}$ "x11 $\frac{3}{4}$ ", 14 ct white Aida, WA



1909 Mysterious Castle
40x30 cm, 15 $\frac{3}{4}$ "x11 $\frac{3}{4}$ ",
14 ct white Aida, WA



2098 Sagrada Familia
30x40 cm, 11 $\frac{3}{4}$ "x15 $\frac{3}{4}$ ",
14 ct white Aida, MA



1963 Energy Mandala
20x20 cm, 7 $\frac{3}{4}$ "x7 $\frac{3}{4}$ ",
18 ct white Aida, MA



2094 Central Park 40x30 cm,
15¾"x11¾", 14 ct white Aida, WA



2064 Night Park 30x40 cm,
11¾"x15¾", 14 ct black Aida, WA



2002 Ready for Autumn 25x25 cm,
9¾"x9¾", 14 ct white Aida, MA



2031 Sunny Autumn 40x60 cm,
15¾"x23½", 10 ct white Aida, WA



1964 Self-knowledge Mandala
20x20 cm, 7¾"x7¾", 18 ct white Aida, MA



2018 Southern Magnolia

30x24 cm, 11 $\frac{3}{4}$ "x9 $\frac{1}{2}$ ", 14 ct white Aida, M



2042 Flowering Bonsai

30x24 cm, 11 $\frac{3}{4}$ "x9 $\frac{1}{2}$ ", 14 ct white Aida, WA



2044 Autumn Bonsai

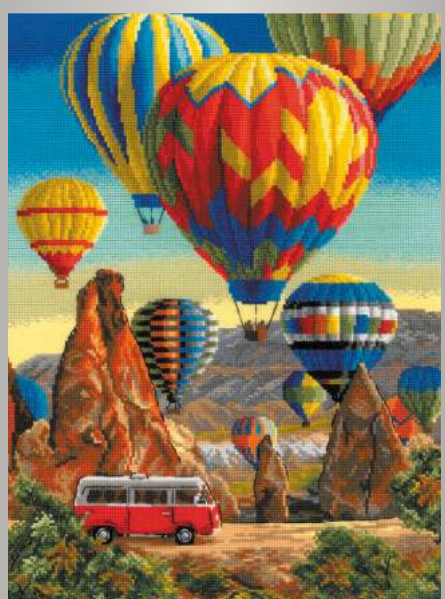
30x24 cm, 11 $\frac{3}{4}$ "x9 $\frac{1}{2}$ ", 14 ct white Aida, WA



1861 Dreamers 21x30 cm, 8 $\frac{1}{4}$ "x11 $\frac{3}{4}$ ",
14 ct white Aida, MA



1987 We be of one blood
21x30 cm, 8 $\frac{1}{4}$ "x11 $\frac{3}{4}$ ",
14 ct white Aida, MA



2021 Festival in Cappadocia 30x40 cm,
11¾"x15¾", 14 ct white Aida, WA



2130 Hitachi Seaside Park 30x40 cm,
11¾"x15¾", 14 ct white Aida, WA



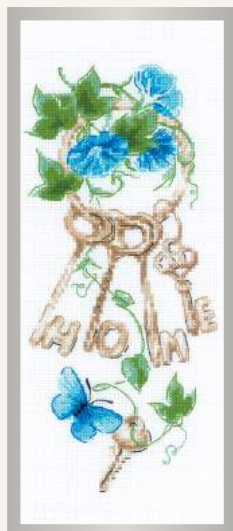
1928 Gentleman
25x33 cm, 9¾"x13", 14 ct white Aida, MA



1495 Dachshund Blues
20x20 cm, 7¾"x7¾",
14 ct white Aida, MA



1904 Green Hills 40x30 cm, 15¾"x11¾", 14 ct white Aida, WA



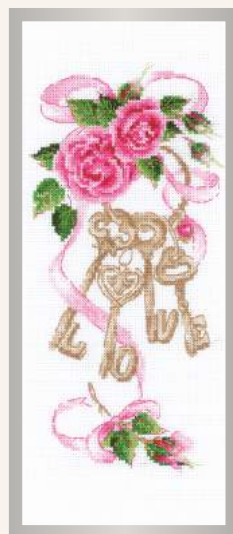
1929
Keys to Home
13x30 cm, 5"x11¾",
14 ct white Aida, M



1965 Little Mermaid
Aquamarine 21x30 cm,
8¼"x11¾", 14 ct white Aida, MA



1966
Little Mermaid Rosalina
21x30 cm, 8¼"x11¾",
14 ct white Aida, MA



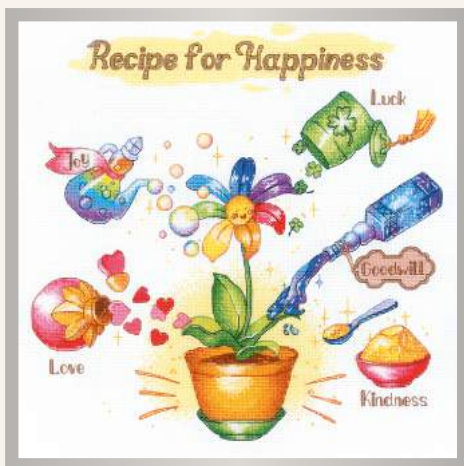
1930
Keys to Happiness
13x30 cm, 5"x11¾",
14 ct white Aida, M



2005 Sweet Dessert
20x20 cm, 7¾"x7¾",
14 ct white Aida, MA



1919 Recipe. Pancakes 30x30 cm,
11 $\frac{3}{4}$ "x11 $\frac{3}{4}$ ", 18 ct white Aida, MA



1920 Recipe for Happiness 30x30 cm,
11 $\frac{3}{4}$ "x11 $\frac{3}{4}$ ", 18 ct white Aida, MA



1473 Evening Cafe 50x25 cm, 19 $\frac{3}{4}$ "x9 $\frac{3}{4}$ ", 14 ct black Aida, MA



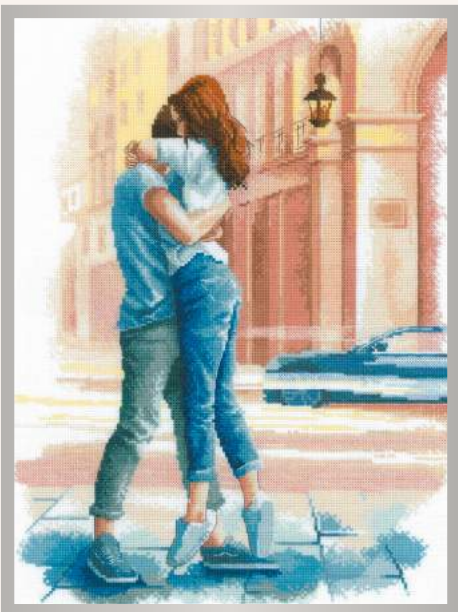
1704 For Prosperity
13x13 cm, 5"x5",
14 ct white Aida, M

1926 Wedding Rings
15x15 cm, 6"x6",
18 ct colored Aida, MA





2154 Love Story. Empathy 30x40 cm,
11¾"x15¾", 14 ct white Aida, MA



2155 Love Story. Passion 30x40 cm,
11¾"x15¾", 14 ct white Aida, MA



2167 Love Story. Wisdom 30x40 cm,
11¾"x15¾", 14 ct white Aida, MA



2129 Ballet 24x30 cm, 9½"x11¾",
14 ct white Aida, WA



1489 Tram Route 30x21 cm, 11¾"x8¼",
14 ct colored Aida, WA



2128 Wandering Wind
21x30 cm, 8¼"x11¾",
14 ct colored Aida, WA



1490 Cycle Lane
30x21 cm, 11¾"x8¼",
14 ct colored Aida, WA



1405 From all Heart 11x11 cm,
4¼"x4¼", 25 ct colored Lugana,
B, MA



1683 Christmas City
60x21 cm, 23½"x8¼", 14 ct colored Aida, WA



1979 Forest Calendar 30x40 cm, 11 $\frac{3}{4}$ "x15 $\frac{3}{4}$ ",
14 ct flaxen Aida, WA, M



1831 Italian Door 21x30 cm,
8 $\frac{1}{4}$ "x11 $\frac{3}{4}$ ", 14 ct colored Aida, WA



2051 City on Water 24x30 cm,
9 $\frac{1}{2}$ "x11 $\frac{3}{4}$ ", 14 ct white Aida, MA



1942 Travelling Sorcerer 30x21 cm, 11 $\frac{3}{4}$ "x8 $\frac{1}{4}$ ",
14 ct white Aida, WA



2027 Squirrel
20x20 cm, 7 $\frac{3}{4}$ "x7 $\frac{3}{4}$ ",
10 ct flaxen Aida, WA



2084 Sunshine
10x10 cm, 4"x4",
10 ct white Aida, MA



2136 Cat Calendar

30x40 cm, 11 $\frac{3}{4}$ "x15 $\frac{3}{4}$ ", 14 ct white Aida, WA



1832 Scottish Door 21x30 cm,
8 $\frac{1}{4}$ "x11 $\frac{3}{4}$ ", 14 ct colored Aida, WA



2010 Ciao, bella

15x15 cm, 6"x6",
10 ct white Aida, WA



2011 Ma chérie!

15x15 cm, 6"x6",
10 ct white Aida, WA



2083 Amore mio

15x15 cm, 6"x6",
10 ct white Aida, WA



2105 Mare d'amore

15x15 cm, 6"x6",
10 ct white Aida, WA



1862 Favorite Tales
20x50 cm, 7 $\frac{3}{4}$ "x19 $\frac{3}{4}$ ",
14 ct white Aida,
M, wooden hanger



1010 Summer Bouquet
48x48 cm, 19"x19",
14 ct flaxen Aida, WA



610 Winter 13x13 cm, 5"x5",
15 ct white Aida, WA



611 Spring 13x13 cm, 5"x5",
15 ct white Aida, WA



612 Summer 13x13 cm, 5"x5",
15 ct white Aida, WA



613 Autumn 13x13 cm, 5"x5",
15 ct white Aida, WA



2038
Northern Fairytale 40x30 cm,
15¾"x11¾", 14 ct black Aida, MA



857 Cat with Sewing Machine 18x24 cm, 7"x9½",
15 ct colored Aida, WA



858 Cat with Clock 18x24 cm, 7"x9½",
15 ct colored Aida, WA



859 Cat with Gramophone 18x24 cm, 7"x9½",
15 ct colored Aida, WA



860 Cat with Telephone 18x24 cm, 7"x9½",
15 ct colored Aida, WA



1737 Bathroom Interior, 2 pcs. 15x15 cm, 6"x6", 18 ct colored Aida, MA



1770 King of the Heap 19x90 cm, 7½"x35½",
14 ct white Aida, M,
wooden hangers



1586 Magic Feather
21x30 cm, 8¼"x11¾",
fabric with pre-printed
picture, WA



1486 Sweet Dreams 35x35 cm, 13¾"x13¾",
14 ct white Aida, MA, B, T, lace



1588 Lovely Flower
30x34 cm, 11¾"x13½",
fabric with pre-printed picture, WA



1587 Bird of Luck
21x30 cm, 8¼"x11¾",
fabric with pre-printed
picture, WA



1123 Girls Birth Announcement
18x24 cm, 7"x9½",
14 ct white Aida, MA



1124 Boys Birth Announcement
18x24 cm, 7"x9½",
14 ct white Aida, MA



1179 Wedding Tango
20x26 cm, 7¾"x10¼",
14 ct white Aida, MA, B, T



1418 It's a Boy! 20x20
cm, 7¾"x7¾", 28 ct white
Brittney Lugana, MA, lace



1417 It's a Girl! 20x20 cm,
7¾"x7¾", 28 ct white
Brittney Lugana, MA, lace



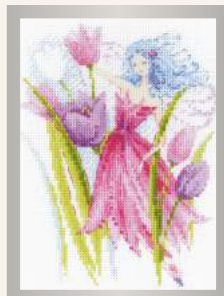
1730 Cuckoo Clock
25x40 cm, 9¾"x15¾",
14 ct white Aida, WA



1934 Hello, Little One!
(for a girl)
15x15 cm, 6"x6",
18 ct white Aida, MA



1935 Hello, Little One!
(for a boy)
15x15 cm, 6"x6",
18 ct white Aida, MA



1562 Spring Breeze Fairy
15x20 cm, 6"x7¾",
14 ct white Aida, MA, B



1948 Easter Still Life with Bunny
30x40 cm, 11 $\frac{3}{4}$ "x15 $\frac{3}{4}$ ", 14 ct white Aida, MA



1927AC Easter Patterns, 3 pcs.
5,5x6 cm, 2 $\frac{1}{8}$ "x2 $\frac{1}{4}$ ", 10 ct plastic
canvas, WA, T

**1860AC Easter Bunny and
Friends, 3 pcs.**
5x5 cm; 5x6 cm; 5x5 cm;
2"x2"; 2"x2 $\frac{1}{4}$ "; 2"x2";
10 ct plastic canvas, WA, bell





2156 Holiday Train 30x10 cm, 11 $\frac{3}{4}$ "x4", 14 ct white Aida, MA, B



1592 Winter Window
15x21 cm, 6"x8 $\frac{1}{4}$ ", 14 ct white Aida, WA



SYMBOL OF THE YEAR

2145AC Little Dragons, 3 pcs.

6x6,5 cm; 6x6,5 cm; 7x5,5 cm;
2"x2 $\frac{1}{2}$ "; 2"x2 $\frac{1}{2}$ "; 2 $\frac{3}{4}$ "x2 $\frac{1}{4}$ ";
10 ct plastic canvas, WA, felt, magnets



SYMBOL OF THE YEAR

2141 Dragon Tea Time 15x15 cm,
6"x6", 10 ct white Aida, WA



SYMBOL OF THE YEAR

2142 Good Luck Coin 20x20 cm,
7 $\frac{3}{4}$ "x7 $\frac{3}{4}$ ", 14 ct white Aida, WA



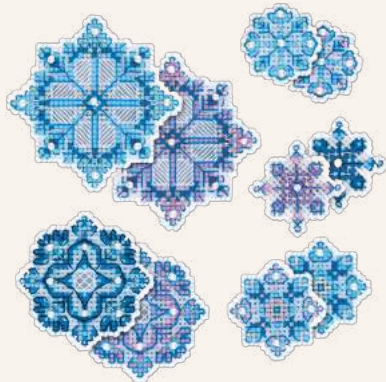
1752 Christmas Table Topper
45x45 cm, 17³/₄"x17³/₄", 14 ct white Aida, WA



1729 Poinsettia 19x90 cm,
7¹/₂"x35¹/₂", 14 ct white Aida,
WA, M, wooden hangers



1897 Lapland
15x31 cm, 6"x12¹/₄",
14 ct colored Aida,
MA, wooden hanger



1889AC
Snowflakes, 5 pcs.
9,5x9,5 cm; 7,5x7,5 cm;
5,5x5,5cm; 4,5x4,5 cm;
4,5x4,5 cm; 3³/₄"x3³/₄";
3"x3"; 2¹/₄"x2¹/₄";
1³/₄"x1³/₄"; 1³/₄"x1³/₄"
10 ct plastic canvas,
WA, MT, B



1954 In The Night Forest 40x30 cm, 15¾"x11¾",
14 ct white Aida, MA



2056 Christmas Light
18x24 cm, 7"x9½",
14 ct black Aida, MA



2143 Happy Street 30x30 cm, 11¾"x11¾",
14 ct white Aida, MA



2052 My Beloved Bunnies 30x30 cm,
11¾"x11¾", 14 ct white Aida, WA, M



1853 Love
18x10 cm, 7"x4",
14 ct white Aida,
MA

**1976 Curious Little
Tiger** 20x20 cm,
7¾"x7¾", 14 ct
white Aida, MA





2149 My Sweet Angel 24x30 cm,
9½"x11¾", 14 ct white Aida, WA



2171 Gnomes 30x21 cm, 11¾"x8¼",
14 ct white Aida, MA

1538AC Santa Claus
6,5x8 cm, 2½"x3¼",
10 ct plastic canvas,
WA



1906 To the Holidays 33x25 cm, 13"x9¾",
14 ct white Aida, MA



1898 New Year's Calf 25x25 cm,
9¾"x9¾", 14 ct white Aida, MA



**1681AC Christmas Tree Decoration
Snowmen, 3 pcs.**
7,5x7 cm, 7,5x7 cm, 5,5x7 cm,
3"x2¾", 3"x2¾", 2¼"x2¾",
10 ct plastic canvas, WA, B, metal fittings



1903 Christmas Shelf

30x21 cm, 11 $\frac{3}{4}$ "x8 $\frac{1}{4}$ ", 14 ct flaxen Aida, WA



1901 Bear, Cones and Deer

21x30 cm, 8 $\frac{1}{4}$ "x11 $\frac{3}{4}$ ", 14 ct white Aida, WA



1977 Winter Tea Time 18x24 cm,
7"x9 $\frac{1}{2}$ ", 14 ct black Aida, MA



1664 Alarm Clock

9x9 cm, 3 $\frac{1}{2}$ "x3 $\frac{1}{2}$ ",
14 ct colored Aida, WA



1667 Snow

9x9 cm, 3 $\frac{1}{2}$ "x3 $\frac{1}{2}$ ",
14 ct colored Aida, WA



1666 Love

9x9 cm, 3 $\frac{1}{2}$ "x3 $\frac{1}{2}$ ",
14 ct colored Aida, WA



1665 Skates

9x9 cm, 3 $\frac{1}{2}$ "x3 $\frac{1}{2}$ ",
14 ct colored Aida, WA

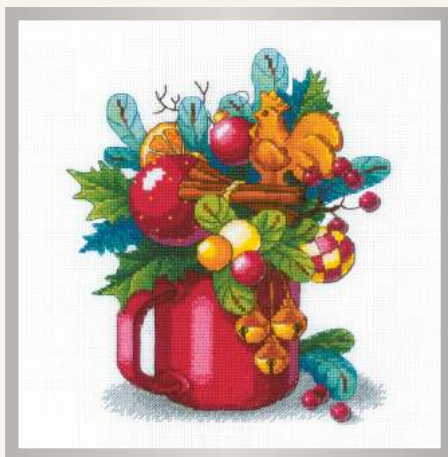


1668 Lantern

9x9 cm, 3 $\frac{1}{2}$ "x3 $\frac{1}{2}$ ",
14 ct colored Aida, WA



1757 Christmas Eve 21x30 cm, 8¼"x11¾",
14 ct flaxen Aida, WA, M, B



1985 New Year's Aroma 25x25 cm,
9¾"x9¾", 14 ct white Aida, MA



2029 Snowfall in the Forest
20x20 cm, 7¾"x7¾",
14 ct white Aida, WA



1661 Cabin with Sleigh
15x15 cm, 6"x6", 14 ct
white Aida, WA, M, B, T



1662 Ice Cabin 15x15 cm,
6"x6", 14 ct white Aida,
WA, M, B, T



1742 Winter Birds,
2 pcs. 8x7,9x7 cm, 3¼"x2¾",
3½"x2¾", 14 ct white Aida,
WA, B, filling, soutache tape



1663 Cabin with a Bell
15x15 cm, 6"x6",
14 ct white Aida,
WA, M, B, T, bell



1660 Winter Cabin
15x15 cm, 6"x6",
14 ct white Aida,
WA, M, B, T



1700 Cushion/Panel Spanish Lace
40x40 cm, 15 $\frac{3}{4}$ "x15 $\frac{3}{4}$ ", 14 ct colored Aida,
WA, fabric for the back of the cushion

1830 Cushion/Panel Gzhel Painting
40x40 cm, 15 $\frac{3}{4}$ "x15 $\frac{3}{4}$ ", 14 ct white Aida,
WA, fabric for the back of the cushion



1600 Cushion/Panel Viennese Lace
40x40 cm, 15 $\frac{3}{4}$ "x15 $\frac{3}{4}$ ", 14 ct colored Aida,
WA, fabric for the back of the cushion

1758 Cushion/Panel Khokhloma Painting
40x40 cm, 15 $\frac{3}{4}$ "x15 $\frac{3}{4}$ ", 14 ct black Aida,
WA, fabric for the back of the cushion



1625 Cushion/Pannel Stained Glass Window. Butterflies 33x33 cm, 13"x13", 10 ct Aida with pre-printed background, WA



1958 Bright Butterflies 40x40 cm, 15³/₄"x15³/₄", 10 ct white Aida, WA



1959 Carps 40x40 cm, 15³/₄"x15³/₄", 10 ct white Aida, WA



1999 Royal Pansies 40x40 cm, 15³/₄"x15³/₄", 10 ct white Aida, WA

1039 Pansy Pincushion 11x8 cm, 4¹/₄"x3¹/₄", 14 ct flaxen Aida, WA, filling



**1413 Moorish Lawn Cushion**

40x40 cm, 15¾"x15¾",
10 ct white Aida, WA

**1347 Pastel Bindweed Cushion**

40x40 cm, 15¾"x15¾",
10 ct white Aida, WA

**761 Flower Arrangement Cushion**

40x40 cm, 15¾"x15¾",
10 ct black Aida, WA

**1426 Dreamland Cushion**

40x40 cm, 15¾"x15¾",
10 ct white Aida, WA

**1708AC Pendant White Rose**

7x7 cm, 2¾"x2¾", fabric with pre-printed picture, MA, F, T, B, soutache tape, wooden base, filling

**1703 Table Runner/Pannel Sea Horse**

The size of the panel is
62x32 cm, 24½"x12½",
table topper size 45x16 cm, 17¾"x6¼",
18 ct colored Aida, MA



1483 Terra Cushion
40x40 cm, 15¾"x15¾",
10 ct white Aida, WA,
fabric for the back of the cushion



2100 Feathers Cushion
40x30 cm, 15¾"x11¾", 10 ct white Aida, WA



1871 Cushion Mosaic 40x40 cm,
15¾"x15¾", 10 ct white Aida, WA, T,
fabric for the back of the cushion



2060 Bunny in Clover
30x30 cm, 11¾"x11¾", 10 ct white Aida, WA



1805AC Sleep Mask Sweet Dreams
19x9 cm, 7½"x3½", 18 ct colored Aida,
MA, elastic band, lining fabric



1647 Bunny Cushion
10 ct white Aida, WA, zipper,
fabric for the back of the cushion.
Finished size of the pillow 30x35 cm,
11¾"x13¾"



1989
Owl Dreams
 25x40 cm, 9¾"x15¼",
 14 ct white Aida, WA



1802AC
Shell Pincushion
 10x15 cm, 4"x6", 18 ct colored Aida, MA, B, filling



1803
Dream Catcher
 25x40 cm, 9¾"x15¼",
 14 ct black Aida, WA



1679AC **Cosmetic bag Irises**
 20x13 cm, 7¾"x5",
 14 ct black Aida, WA, zipper,
 lining fabric



1640 Tea and Coffee Napkins
28x28 cm, 11"x11", 14 ct flaxen Aida, WA



1553AC Little Birdie
6,5x5,5 cm, 2½"x2¼",
10 ct plastic canvas, WA,
wooden stick



866 Watermelon Pincushion
9x5x3 cm, 3½"x2"x1¼",
15 ct white Aida,
WA, filling



1228 Zigouigoui Delight
8x8 cm, 3¼"x3¼",
25 ct colored Lugana, MA,
MT, B, filling

1822AC Biscornu Dawn
8x8 cm, 3¼"x3¼",
25 ct colored Lugana,
MA, MT, B, filling



1695AC Berlingo Primroses
6x5 cm, 2¼"x2",
18 ct colored Aida,
MA, B, filling



1227 Biscornu Fantasy
8x8 cm, 3¼"x3¼",
25 ct colored Lugana,
MA, MT, B, filling



1620AC Biscornu Poppies
8x8 cm, 3¼"x3¼", 18 ct colored Aida,
MA, B, filing

**1997AC Soaring Butterflies, 3 pcs.**

9x6 cm, 8x5 cm, 6x5 cm, 3½"x2¼",
3¼"x2", 2¼"x2", 10 ct plastic canvas,
WA

**1885AC Magnets Three Calves, 3 pcs.**

7x10 cm, 2¾"x4", 10 ct plastic canvas,
WA, F, magnets, rings

**2041AC Sweet Bunnies, 3 pcs.**

4x6 cm, 1½"x2¼", 10 ct plastic canvas,
WA, felt, magnets

**2081AC Owlets, 3 pcs.**

4,5x6 cm, 1½"x2¼", 10 ct plastic
canvas, WA, felt, magnets

1980 Winter Gifts, 3 pcs.

10x18 cm, 4"x7",
15 ct colored Aida,
WA, beads, fabric
for the bags

**1581AC Keychain Cozy Cottage**

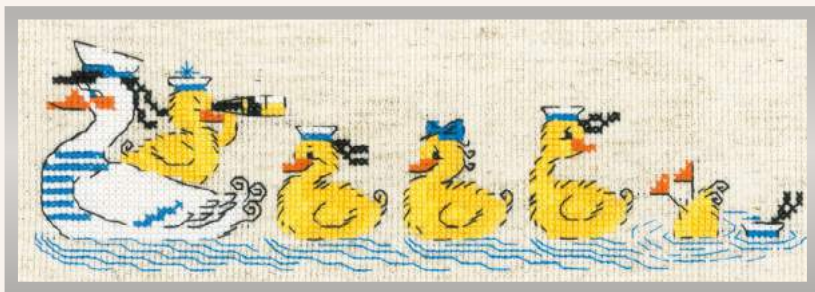
4x5,5 cm, 1½"x2¼", 10 ct plastic canvas,
WA, key ring

**2036 Gift Bags, 2 pcs.**

14x20 cm, 5½"x7¾", 18 ct colored Aida,
MA, fabric for the bags



1711 Hedgehogs 24x8 cm, 9½"x3¼", 14 ct flaxen Aida, M



1865 Over the Waves 24x8 cm, 9½"x3¼", 14 ct flaxen Aida, M



1936 The Owl Family 24x8 cm, 9½"x3¼", 14 ct flaxen Aida, M



1975 Penguins 24x8 cm, 9½"x3¼", 14 ct flaxen Aida, M



1879
Foxes in the Leaves
 8x24 cm, 3¼"x9½",
 14 ct white Aida, WA



1322 Funny Ducklings 40x25 cm, 15¾"x9¾",
 14 ct white Aida, WA



1323 Funny Penguins 40x25 cm, 15¾"x9¾",
 14 ct white Aida, WA



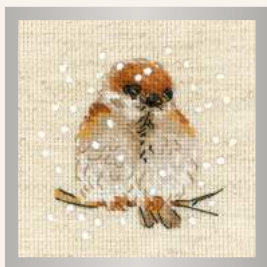
HB153 Two Ravens
 16x13 cm, 6¼"x5",
 10 ct white Aida, WA



1823 Waiting for a Holiday
 16x13 cm, 6¼"x5",
 14 ct white Aida, WA, MT



HB142 Gentle Snow
 13x16 cm, 5"x6¼",
 10 ct white Aida, WA



1680 Sparrow 10x10 cm,
4"x4", 14 ct flaxen Aida, WA



1877 Little Bunny 13x13 cm,
5"x5", 14 ct flaxen Aida, WA



1755 Little Owls 13x13 cm,
5"x5", 14 ct flaxen Aida, WA



1753 Little Hedgehog
13x13 cm, 5"x5",
14 ct flaxen Aida, WA



1754 Little Raccoon
13x13 cm, 5"x5",
14 ct flaxen Aida, WA



1777 Little Deer
13x13 cm, 5"x5",
14 flaxen Aida, WA



1756 Little Boar 13x13 cm,
5"x5", 14 ct flaxen Aida, WA



1776 Little Fox 13x13 cm,
5"x5", 14 flaxen Aida, WA



1883 Panda Gift 15x15 cm,
6"x6", 10 ct white Aida, WA



HB016 You are my Sweetheart
16x13 cm, 6¼"x5",
10 ct white Aida, WA



HB053 Little Imps
16x13 cm, 6¼"x5",
10 ct white Aida, WA



HB061 Panda
18x15 cm, 7"x6",
10 ct white Aida, WA



1841 Yellow Narcissus 13x13 cm, 5"x5", 10 ct flaxen Aida, WA



1842 Purple Bindweed 13x13 cm, 5"x5", 10 ct flaxen Aida, WA



1857 Pair of Pansies 13x13 cm, 5"x5", 10 ct flaxen Aida, WA



1843 Red Rose 13x13 cm, 5"x5", 10 ct flaxen Aida, WA



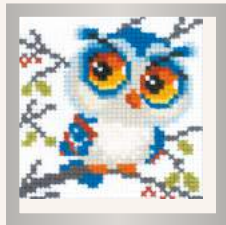
1165 Garden Strawberry 10x10 cm, 4"x4", 10 ct white Aida, M, B



1319 Dandelion Seeds 10x10 cm, 4"x4", 10 ct white Aida, M, B



1795 Little Turtle 10x10 cm, 4"x4", 10 ct white Aida, WA



1784 Scops Owl 10x10 cm, 4"x4", 10 ct white Aida, WA



1630 Town in the Mountains 24x12 cm, 9½"x4¾"



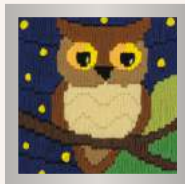
HB094 Nymphalidae Butterfly 13x13 cm, 5"x5", 14 ct white Aida, M



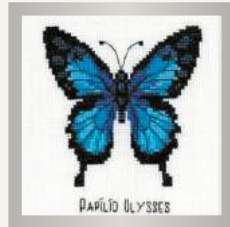
1572 Pink Garden 12x12 cm, 4¾"x4¾", 10 ct Aida



1714 Fox in Daisies 10x10 cm, 4"x4"



1715 Owl Among the Stars 10x10 cm, 4"x4"



HB095 Ulysses Butterfly 13x13 cm, 5"x5", 14 ct white Aida, M

All long stitch kits use 13 ct stramin canvas with pre-printed picture and woolen/acrylic threads, if other is not stated.



HB174 Apple
13x16 cm, 5"x6¼",
10 ct white Aida,
WA



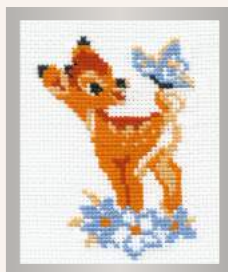
HB172 Wild Strawberry
13x16 cm, 5"x6¼",
10 ct white Aida, WA



HB160 Sailor
13x16 cm, 5"x6¼",
10 ct white Aida,
WA



1882 The Leaf Gatherer
15x18 cm, 6"x7",
14 ct white Aida, M



210 Doe
13x16 cm, 5"x6¼",
10 ct white Aida, WA



1902 Calf with a Bell
13x16 cm, 5"x6¼",
10 ct white Aida, WA,
bell



150 Dalmatian Dog
13x16 cm, 5"x6¼",
10 ct white Aida,
WA



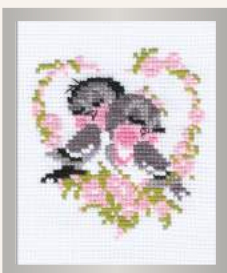
792 Violas
13x16 cm, 5"x6¼",
15 ct white Aida, WA



HB164 Brave Pirate
13x16 cm, 5"x6¼",
14 ct white Aida, M



HB163 Treasure Island
13x16 cm,
5"x6¼", 14 ct white
Aida, M



524 First Love
13x16 cm, 5"x6¼",
10 ct white Aida,
WA



790 Anemones
13x16 cm, 5"x6¼",
15 ct white Aida,
WA



1894 Good Souls. Twinkle
20x20 cm, 7 $\frac{3}{4}$ "x7 $\frac{3}{4}$ ",
14 ct white Aida, WA



1895 Good Souls. Beauty
20x20 cm, 7 $\frac{3}{4}$ "x7 $\frac{3}{4}$ ",
14 ct white Aida, WA



HB177 English Bulldog
13x13 cm, 5"x5",
14 ct white Aida, M



HB104 Bow
15x18 cm, 6"x7",
10 ct white Aida,
WA, T



HB105 Baby Rabbit
15x18 cm, 6"x7",
10 ct white Aida,
WA, T



1911 Teddy Bear Holiday
15x18 cm, 6"x7",
14 ct white Aida, WA



1888 For the Success 15x18 cm,
6"x7", 14 ct white
Aida, M



HB092 Stripies
15x18 cm, 6"x7",
10 ct white Aida, WA



HB067 Puppy
15x18 cm, 6"x7",
10 ct white Aida, WA



HB068 Kitten
15x18 cm, 6"x7",
10 ct white Aida, WA



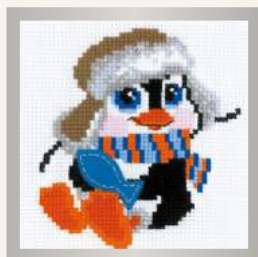
HB093 Pony Crony
15x18 cm, 6"x7",
10 ct white Aida, WA



HB159 Little Frog
15x15 cm, 6"x6",
10 ct white Aida, WA, T



HB156 Little Fox
15x15, 6"x6",
10 ct white Aida, WA, F



HB158 Penguin
15x15, 6"x6",
10 ct white Aida, WA, F



1918 Upside Down
15x15 cm, 6"x6",
10 ct white Aida, WA



HB173 Happy Halloween
15x15 cm, 6"x6",
10 ct white Aida, WA



HB175 Black Cat
15x15 cm, 6"x6",
10 ct white Aida, WA



HB155 Little Lamb
15x15 cm, 6"x6", 10 ct
white Aida, WA, T



HB161 Monkey
15x15 cm, 6"x6",
10 ct white Aida, WA



HB171 Amethyst Butterfly
13x13 cm, 5"x5",
10 ct white Aida, WA



1923 Dog Show
40x20 cm, 15³/₄"x7³/₄",
14 ct white Aida, M



Woolen/acrylic threads utilized in RIOLIS kits are crafted in Europe. Advanced technologies have allowed for the enhancement of raw wool materials by incorporating acrylic into the woolen yarn. These threads consist of 70% acrylic and only 30% wool. Our wool/acrylic threads exhibit superior resistance to abrasion, better color retention, and are less allergenic. The combination of age-old traditions, innovative technologies, and our extensive experience has instilled confidence in the exceptional quality of this material.

The wool/acrylic threads offer a remarkably smooth texture, making them pleasant to the touch. They are easy to stitch, even for those new to such hand-crafts, and the stitches hold tightly, resulting in a soft and matte surface.



RIOLIS thread
catalog 172 colors
Thread: wool/acrylic

RIOLIS embroidery thread
wool/acrylic (Italy)
10 skeins (20 m each) of one color
in the PE package

ALPHABETICAL INDEX

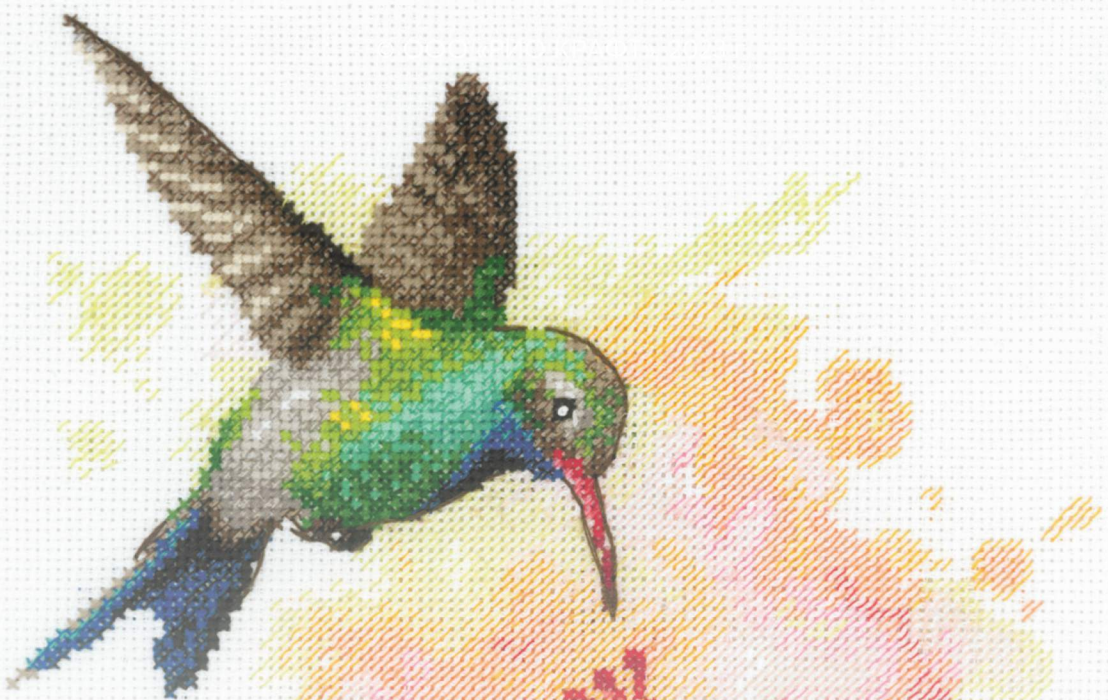
art.	pp.	art.	pp.	art.	pp.	art.	pp.
DIAMOND MOSAIC							
AM0004.....	22	AM0064.....	25	0088 PT.....	37	1003.....	120
AM0005.....	20	AM0065.....	14	0089 PT.....	35	1010.....	140
AM0006.....	21	AM0069.....	21	0091 PT.....	36	1020.....	102
AM0007.....	21	AM0070.....	21	0092 PT.....	36	1036.....	90
AM0009.....	24	AM0072.....	16	0094 PT.....	33	1037.....	90
AM0008.....	16	AM0073.....	22	0095 PT.....	37	1039.....	152
AM0010.....	19	AM0074.....	25	0096 PT.....	37	1056.....	99
AM0011.....	19	AM0076.....	23	0097 PT.....	37	1057.....	98
AM0012.....	17					1065.....	103
AM0013.....	22	RIOLIS PREMIUM		NEEDLEWORK KITS		1066.....	82
AM0014.....	23	100/021.....	30	150.....	162	1067.....	77
AM0015.....	16	100/027.....	29	210.....	162	1068.....	68
AM0016.....	17	100/028.....	29	240.....	47	1069.....	105
AM0017.....	25	100/029.....	30	241.....	47	1071.....	95
AM0018.....	22	100/036.....	30	479.....	52	1077.....	69
AM0019.....	24	100/037.....	31	524.....	162	1078.....	54
AM0020.....	25	100/038.....	31	582.....	100	1079.....	54
AM0021.....	25	100/042.....	28	583.....	94	1080.....	54
AM0022.....	25	100/043.....	27	603.....	91	1088.....	43
AM0023.....	17	100/045.....	29	610.....	140	1098.....	54
AM0024.....	19	100/047.....	28	611.....	140	1121.....	119
AM0025.....	16	100/049.....	28	612.....	140	1122.....	119
AM0026.....	24	100/052.....	31	613.....	140	1123.....	143
AM0027.....	25	100/055.....	29	761.....	153	1124.....	143
AM0028.....	25	100/056.....	28	764.....	82	1134.....	53
AM0029.....	25	100/057.....	26	766.....	72	1142.....	68
AM0030.....	24	100/058.....	27	767.....	86	1143.....	68
AM0031.....	24	100/060.....	30	776.....	103	1144.....	68
AM0032.....	16	100/061.....	27	790.....	162	1151.....	71
AM0033.....	23	100/062.....	27	792.....	162	1155.....	53
AM0034.....	23	100/063.....	26	807.....	95	1159.....	67
AM0035.....	25			808.....	101	1163.....	111
AM0036.....	15	KITS WITH PRE-PRINTED FABRIC		809.....	101	1165.....	161
AM0037.....	24	0012 PT.....	32	811.....	90	1169.....	95
AM0038.....	17	0018 PT.....	33	812.....	90	1170.....	42
AM0039.....	20	0024 PT.....	36	813.....	90	1176.....	81
AM0040.....	20	0028 PT.....	32	814.....	90	1177.....	60
AM0041.....	18	0033 PT.....	33	826.....	66	1179.....	143
AM0042.....	18	0038 PT.....	38	827.....	66	1194.....	59
AM0043.....	18	0043 PT.....	36	835.....	91	1226.....	42
AM0044.....	19	0044 PT.....	38	841.....	96	1227.....	156
AM0045.....	20	0046 PT.....	33	842.....	96	1228.....	156
AM0046.....	19	0051 PT.....	37	857.....	141	1238.....	63
AM0047.....	22	0052 PT.....	38	858.....	141	1239.....	62
AM0048.....	19	0054 PT.....	34	859.....	141	1240.....	62
AM0049.....	19	0057 PT.....	37	860.....	141	1241.....	85
AM0050.....	18	0058 PT.....	34	866.....	156	1247.....	82
AM0051.....	25	0059 PT.....	34	898.....	91	1248.....	82
AM0052.....	25	0065 PT.....	35	900.....	94	1259.....	98
AM0053.....	14	0066 PT.....	35	906.....	81	1276.....	62
AM0054.....	14	0070 PT.....	35	916.....	42	1277.....	61
AM0055.....	15	0071 PT.....	35	924.....	100	1305.....	84
AM0056.....	15	0075 PT.....	34	928.....	85	1306.....	53
AM0057.....	15	0076 PT.....	34	937.....	72	1319.....	161
AM0058.....	15	0077 PT.....	32	941.....	64	1322.....	159
AM0059.....	15	0078 PT.....	36	945.....	116	1323.....	159
AM0060.....	16	0083 PT.....	35	978.....	55	1324.....	111
AM0061.....	23	0084 PT.....	35	989.....	55	1327.....	81
AM0062.....	17			990.....	118	1328.....	81
AM0063.....	17			999.....	47	1333.....	126
						1335.....	105
						1347.....	153

art.	pp.	art.	pp.	art.	pp.	art.	pp.
1351.....	100	1516.....	102	1661.....	150	1753.....	160
1364.....	87	1520.....	57	1662.....	150	1754.....	160
1370.....	70	1525.....	82	1663.....	150	1755.....	160
1384.....	101	1533.....	94	1664.....	149	1756.....	160
1389.....	111	1536.....	110	1665.....	149	1757.....	150
1390.....	73	1537.....	110	1666.....	149	1758.....	151
1391.....	73	1538AC.....	148	1667.....	149	1761.....	73
1393.....	67	1543.....	52	1668.....	149	1762.....	112
1398.....	116	1544.....	113	1669.....	112	1763.....	113
1399.....	71	1545.....	104	1670.....	57	1764.....	128
1400.....	61	1546.....	83	1671.....	76	1765.....	104
1402.....	39	1547.....	83	1672.....	94	1766.....	63
1403.....	102	1549.....	69	1673.....	69	1767.....	68
1404.....	111	1550.....	92	1676.....	56	1770.....	141
1405.....	137	1551.....	93	1677.....	56	1772.....	39
1413.....	153	1552.....	59	1679AC.....	155	1773.....	102
1416.....	75	1553AC.....	156	1680.....	160	1775.....	103
1417.....	143	1556.....	112	1681AC.....	148	1776.....	160
1418.....	143	1557.....	112	1683.....	137	1777.....	160
1426.....	153	1561.....	117	1684.....	115	1779.....	41
1427.....	57	1562.....	143	1685.....	115	1780.....	85
1434.....	61	1569.....	57	1686.....	115	1781.....	126
1437.....	71	1572.....	161	1689.....	58	1782.....	103
1438.....	67	1573.....	91	1690.....	58	1784.....	161
1446.....	93	1574.....	91	1691.....	58	1787.....	125
1447.....	95	1576.....	114	1692.....	84	1788.....	130
1448.....	104	1578.....	70	1693.....	84	1789.....	128
1449.....	104	1579.....	55	1695AC.....	156	1790.....	104
1450.....	104	1581AC.....	157	1696.....	115	1791.....	128
1451.....	66	1585.....	81	1697.....	67	1792.....	129
1455.....	121	1586.....	142	1698.....	43	1794.....	114
1456.....	110	1587.....	142	1700.....	151	1795.....	161
1458.....	127	1588.....	142	1701.....	40	1798.....	108
1462.....	120	1592.....	145	1702.....	40	1801.....	97
1463.....	112	1599.....	72	1703.....	153	1802AC.....	155
1467.....	105	1600.....	151	1704.....	135	1803.....	155
1469.....	73	1603.....	110	1706.....	55	1804.....	78
1470.....	126	1604.....	58	1707.....	90	1805AC.....	154
1471.....	84	1605.....	58	1708AC.....	153	1806.....	88
1472.....	52	1606.....	114	1710.....	81	1807.....	74
1473.....	135	1607.....	114	1711.....	158	1811.....	83
1476.....	121	1611.....	60	1714.....	161	1814.....	124
1477.....	121	1612.....	96	1715.....	161	1816.....	108
1478.....	109	1615.....	106	1717.....	114	1817.....	128
1479.....	74	1618.....	117	1719.....	126	1818.....	109
1480.....	79	1620AC.....	156	1720.....	126	1819.....	109
1483.....	154	1625.....	152	1722.....	115	1820.....	105
1484.....	46	1626.....	70	1723.....	129	1821.....	125
1485.....	105	1627.....	76	1724.....	83	1822AC.....	156
1486.....	142	1629.....	97	1725.....	83	1823.....	159
1488.....	129	1630.....	161	1726.....	87	1824.....	113
1489.....	137	1636.....	73	1729.....	146	1825.....	113
1490.....	137	1640.....	156	1730.....	143	1826.....	69
1491.....	73	1643.....	40	1737.....	141	1827.....	111
1494.....	66	1644.....	52	1740.....	63	1830.....	151
1495.....	133	1645.....	56	1742.....	150	1831.....	138
1496.....	112	1647.....	154	1743.....	89	1832.....	139
1497.....	113	1656.....	100	1744.....	89	1834.....	86
1501.....	51	1657.....	101	1745.....	89	1841.....	161
1502.....	109	1658.....	107	1747.....	52	1842.....	161
1510.....	85	1659.....	115	1751.....	100	1843.....	161
1515.....	102	1660.....	150	1752.....	146	1845.....	59

ALPHABETICAL INDEX

art.	pp.	art.	pp.	art.	pp.	art.	pp.
1846	105	1916	92	1988	45	2058	126
1847	101	1917	50	1989	155	2059	109
1848	75	1918	164	1991	62	2060	154
1850	42	1919	135	1992	118	2062	123
1851	85	1920	135	1993	119	2064	131
1852	93	1921	123	1994	48	2066	50
1853	147	1923	164	1995	75	2067	108
1854	95	1925	85	1996	78	2068	120
1855	70	1926	135	1997AC	157	2069	109
1856	87	1927AC	144	1998	93	2070	45
1857	161	1928	133	1999	152	2071	79
1860AC	144	1929	134	2000	49	2072	51
1861	132	1930	134	2001	80	2075	123
1862	139	1931	115	2002	131	2076	72
1863	48	1932	129	2003	102	2077	89
1864	67	1934	143	2004	75	2078	89
1865	158	1935	143	2005	134	2079	89
1866	97	1936	158	2006	99	2080	107
1867	98	1937	84	2008	116	2081AC	157
1868	88	1938	45	2010	139	2082	79
1869	88	1939	121	2011	139	2083	139
1870	88	1940	124	2012	116	2084	138
1871	154	1941	92	2013	116	2086	106
1872	123	1942	138	2014	124	2087	106
1873	118	1943	121	2015	125	2088	83
1874	118	1944	125	2017	74	2089	127
1875	122	1945	92	2018	132	2090	71
1876	122	1946	92	2019	128	2091	113
1877	160	1947	93	2020	107	2092	75
1878	80	1948	144	2021	133	2093	75
1879	159	1951	117	2022	124	2094	131
1881	110	1952	118	2023	125	2096	86
1882	162	1953	119	2024	62	2097	107
1883	160	1954	147	2026	98	2098	130
1884	42	1955	41	2027	138	2099	86
1885AC	157	1956	87	2029	150	2100	154
1886	78	1958	152	2030	94	2101	113
1887	92	1959	152	2031	131	2102	106
1888	163	1960	56	2032	39	2104	127
1889AC	146	1962	108	2033	79	2105	139
1890	125	1963	130	2034	43	2106	116
1891	74	1964	131	2035	85	2110	80
1892	120	1965	134	2036	157	2111	60
1894	163	1966	134	2037	114	2113	127
1895	163	1967	49	2038	140	2114	130
1897	146	1968	49	2039	124	2115	112
1898	148	1969	108	2040	40	2116	122
1900	50	1972	129	2041AC	157	2117	46
1901	149	1973	99	2042	132	2118	77
1902	162	1974	99	2043	72	2119	77
1903	149	1975	158	2044	132	2120	77
1904	134	1976	147	2046	72	2121	77
1905	87	1977	149	2047	50	2122	46
1906	148	1978	56	2049	75	2123	65
1908	54	1979	138	2050	117	2124	64
1909	130	1980	157	2051	138	2125	117
1910	110	1982	48	2052	147	2126	127
1911	163	1983	48	2053	41	2127	122
1912	80	1984	48	2054	45	2128	137
1913	93	1985	150	2055	62	2129	136
1914	63	1986	75	2056	147	2130	133
1915	92	1987	132	2057	48	2131	46

art.	pp.	art.	pp.	art.	pp.	art.	pp.
2132	84	2209	7				
2133	87	2210	7				
2135	49	2211	4				
2136	139	2212	5				
2137	39	2213	5				
2138	44	2214	5				
2139	44	2215	11				
2140	44	2216	7				
2141	145	2217	11				
2142	145	HB016	160				
2143	147	HB053	160				
2144	64	HB061	160				
2145AC	145	HB067	163				
2146	65	HB068	163				
2148	46	HB092	163				
2149	148	HB093	163				
2150	78	HB094	161				
2151	64	HB095	161				
2152	76	HB104	163				
2154	136	HB105	163				
2155	136	HB142	159				
2156	145	HB153	159				
2157	65	HB155	164				
2158	76	HB156	164				
2159	77	HB158	164				
2160	64	HB159	164				
2161	65	HB160	162				
2162	65	HB161	164				
2163	47	HB163	162				
2164	47	HB164	162				
2165	65	HB171	164				
2167	136	HB172	162				
2168	13	HB173	164				
2169	13	HB174	162				
2170	13	HB175	164				
2171	12, 148	HB177	163				
2172	10						
2173	10						
2174	10						
2175	13						
2176	4						
2177	10						
2178	4						
2180	6						
2182	8						
2183	11						
2185	9						
2186	9						
2187	7						
2188	5						
2189	6						
2190	6						
2191	6						
2192	12						
2196	4						
2198	11						
2199	6						
2201	9						
2202	13						
2205	8						
2206	8						
2207	12						



Instagram:
[instagram.com/riolis_worldwide](https://www.instagram.com/riolis_worldwide)



TikTok:
[tiktok.com/@riolisneedlework](https://www.tiktok.com/@riolisneedlework)



Facebook:
[facebook.com/RIOLIScraft](https://www.facebook.com/RIOLIScraft)



YouTube:
[youtube.com/c/riolis_needlework](https://www.youtube.com/c/riolis_needlework)



Tel.: +370 382 52988 (Lithuania, EU)
www.riolis.com
salesteam@riolis.com



NOT FOR SALE